

Cowal

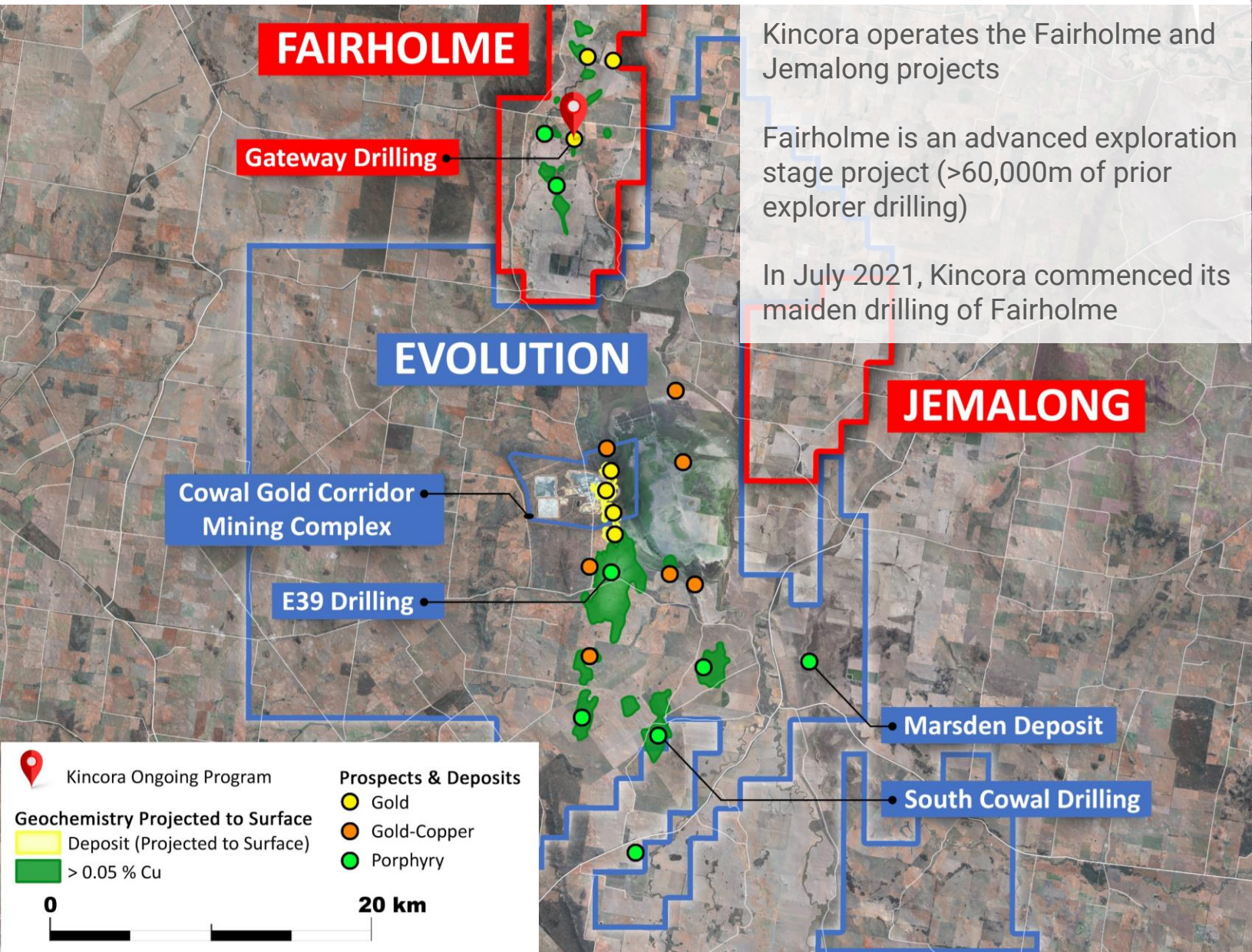
World-class geologic setting for gold and copper-gold deposits

Flagship mine of Australia's third largest gold miner¹

The gold corridor at Cowal host 13.7Moz gold endowment + Marsden porphyry deposit a further >0.5Mt copper & >1Moz gold endowment²

Big, multiple mineralized system footprints

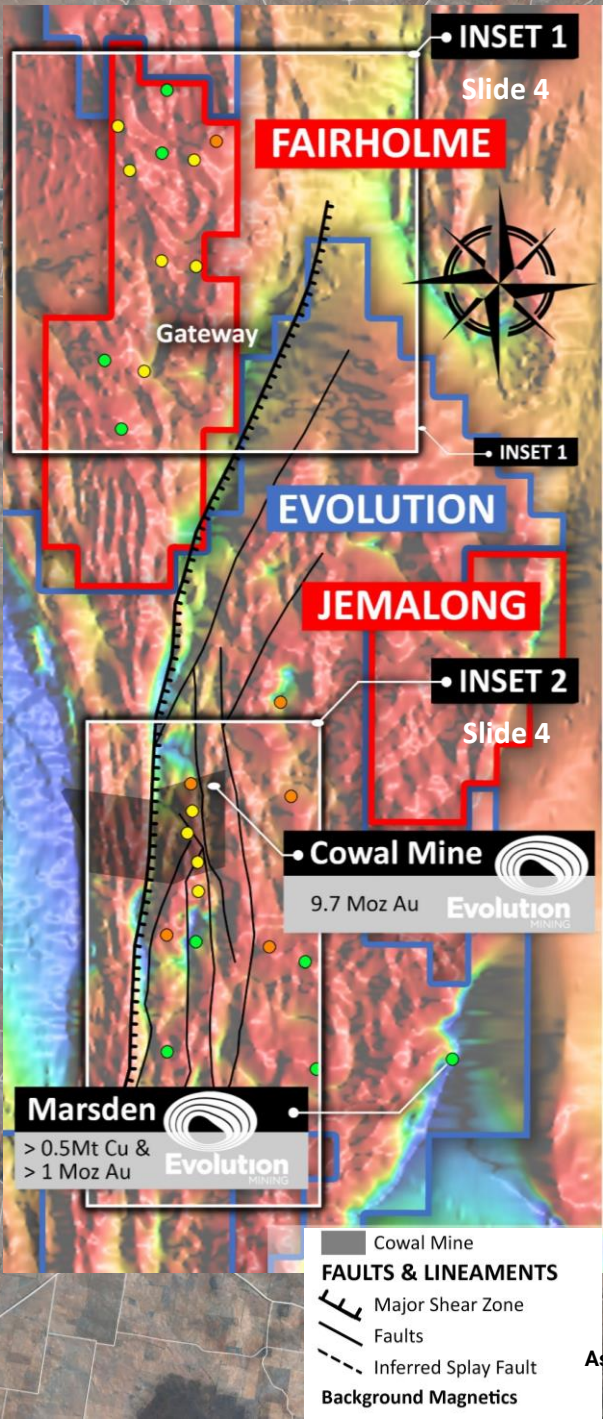
Cowal district mineralized systems



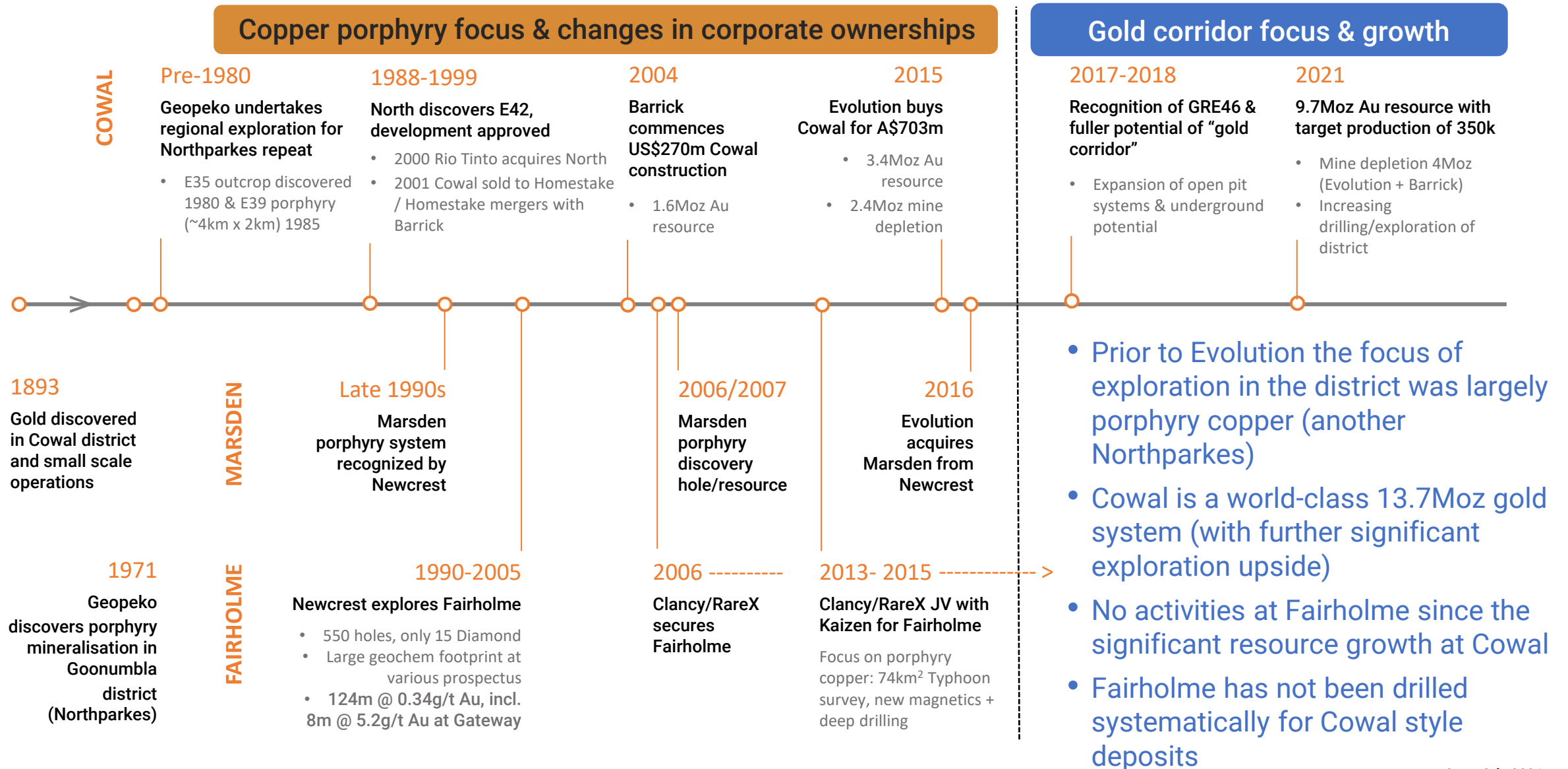
Kincora operates the Fairholme and Jemalong projects

Fairholme is an advanced exploration stage project (>60,000m of prior explorer drilling)

In July 2021, Kincora commenced its maiden drilling of Fairholme



Cowal district key milestones



Cowal district drilling

Kincora Targets

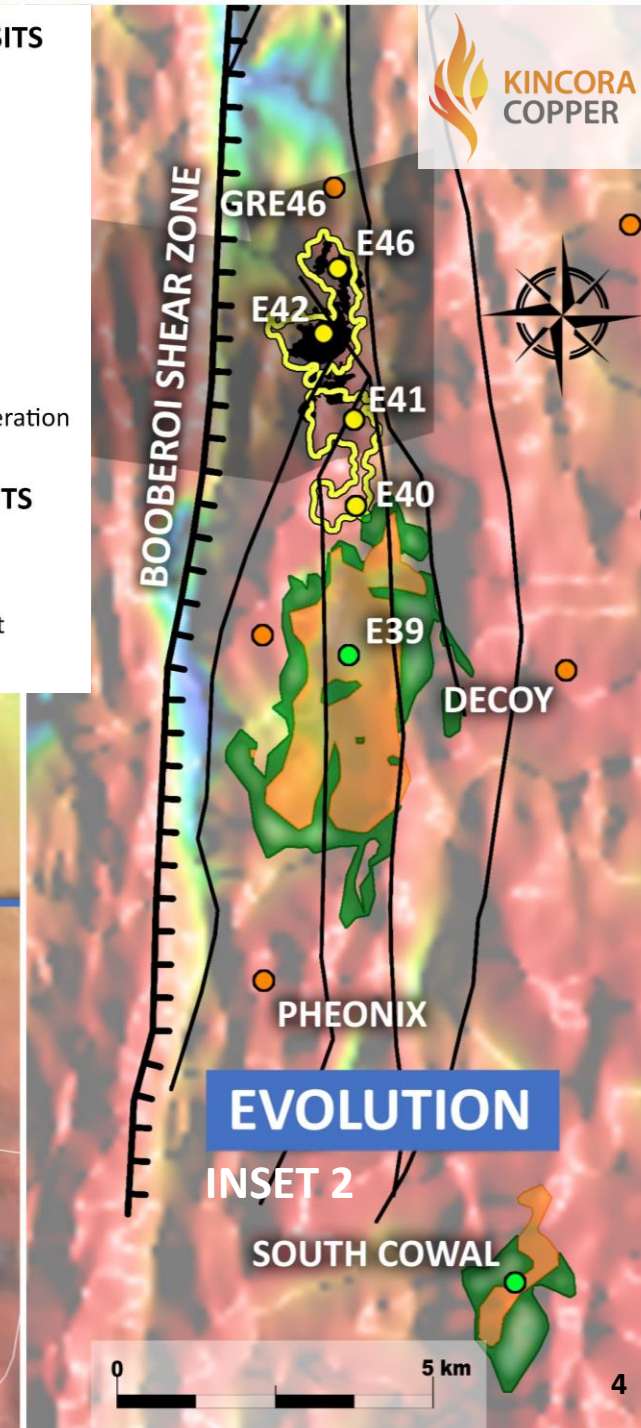
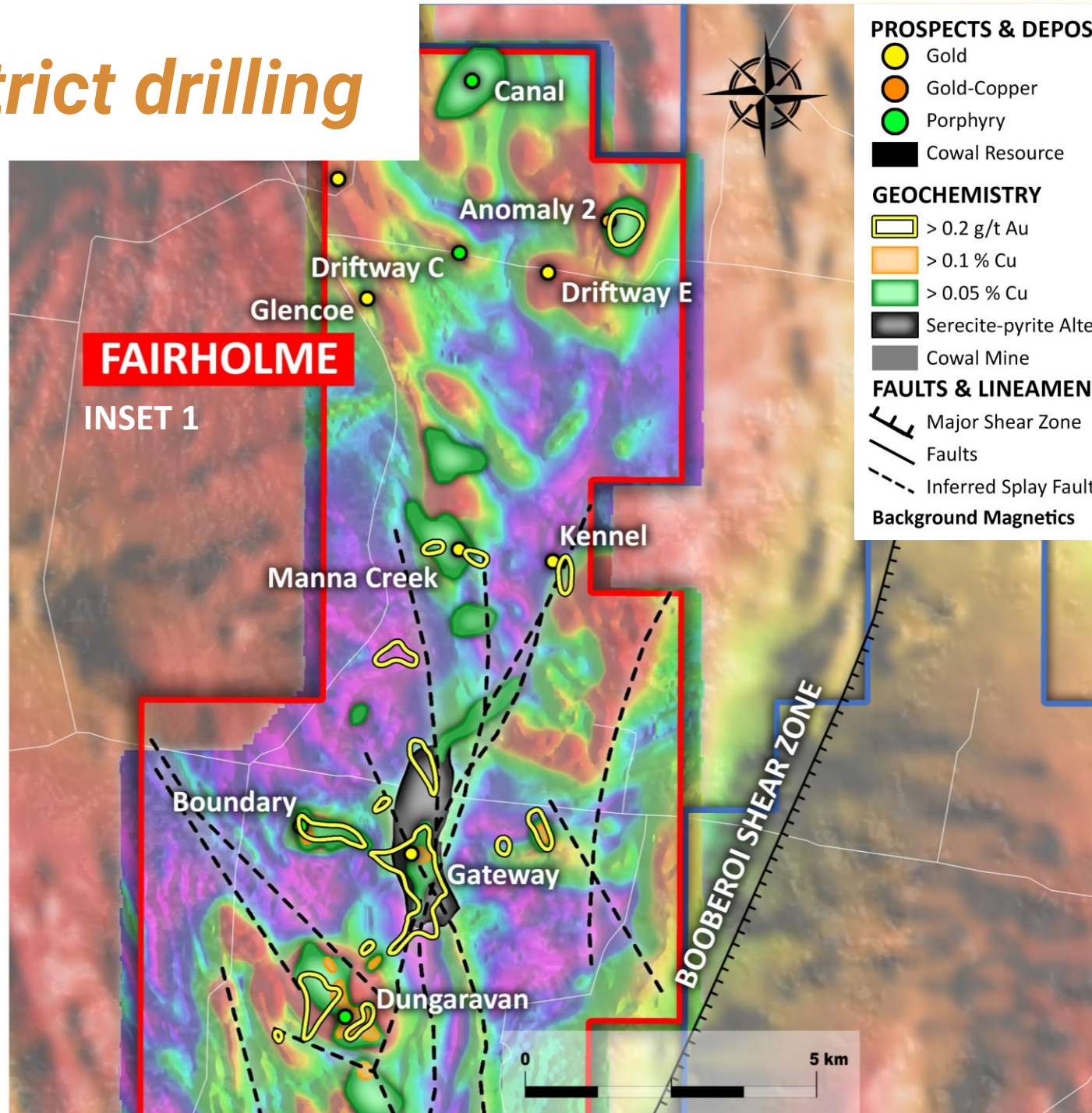
- Gateway^{1,2}
- Anomaly 2²
- Driftway C²
- Glencoe²
- Manna Creek²
- Kennel²

¹ Diamond drilling

² Air-core drilling

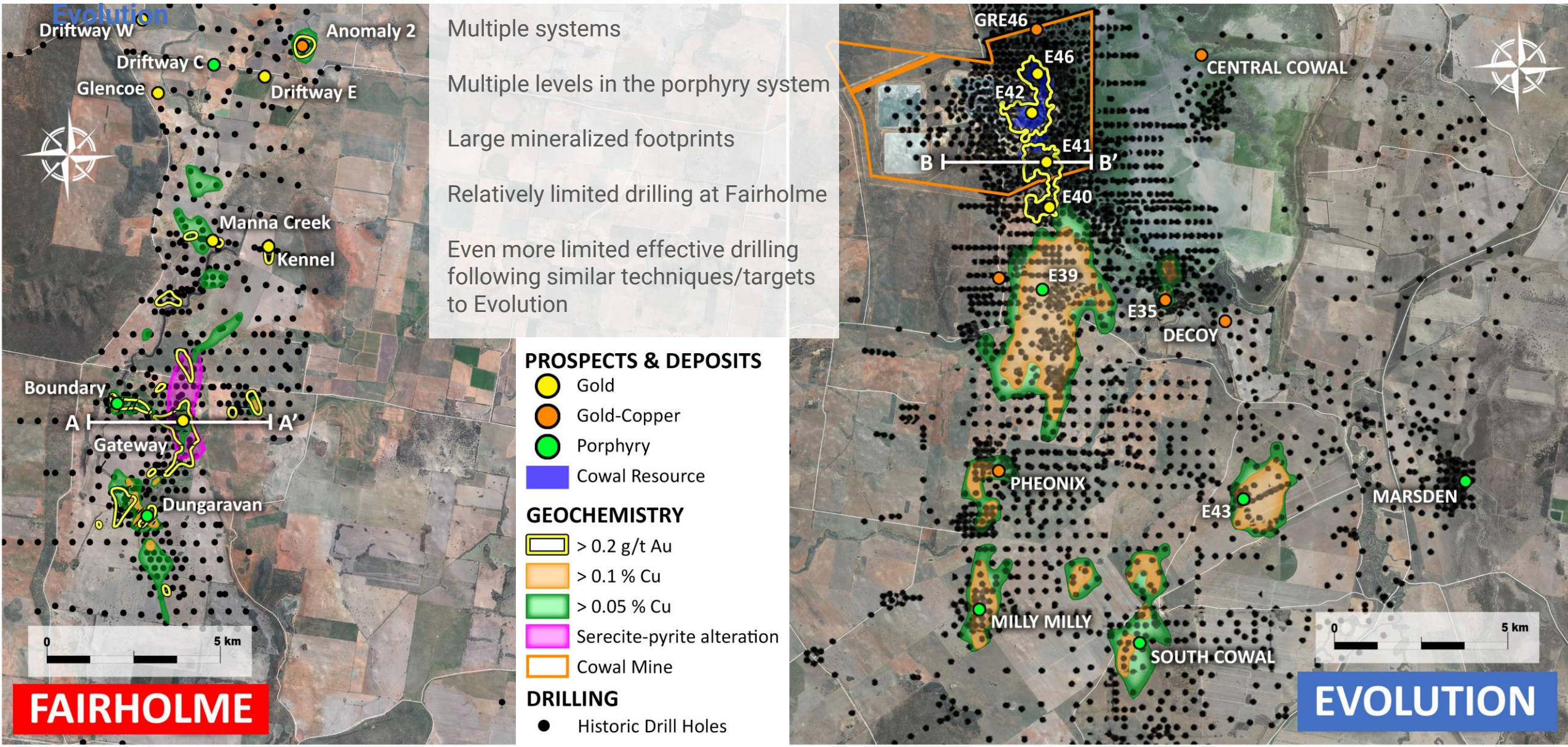
Evolution Targets

- Gold corridor
- E39 porphyry
- South Cowal copper & gold

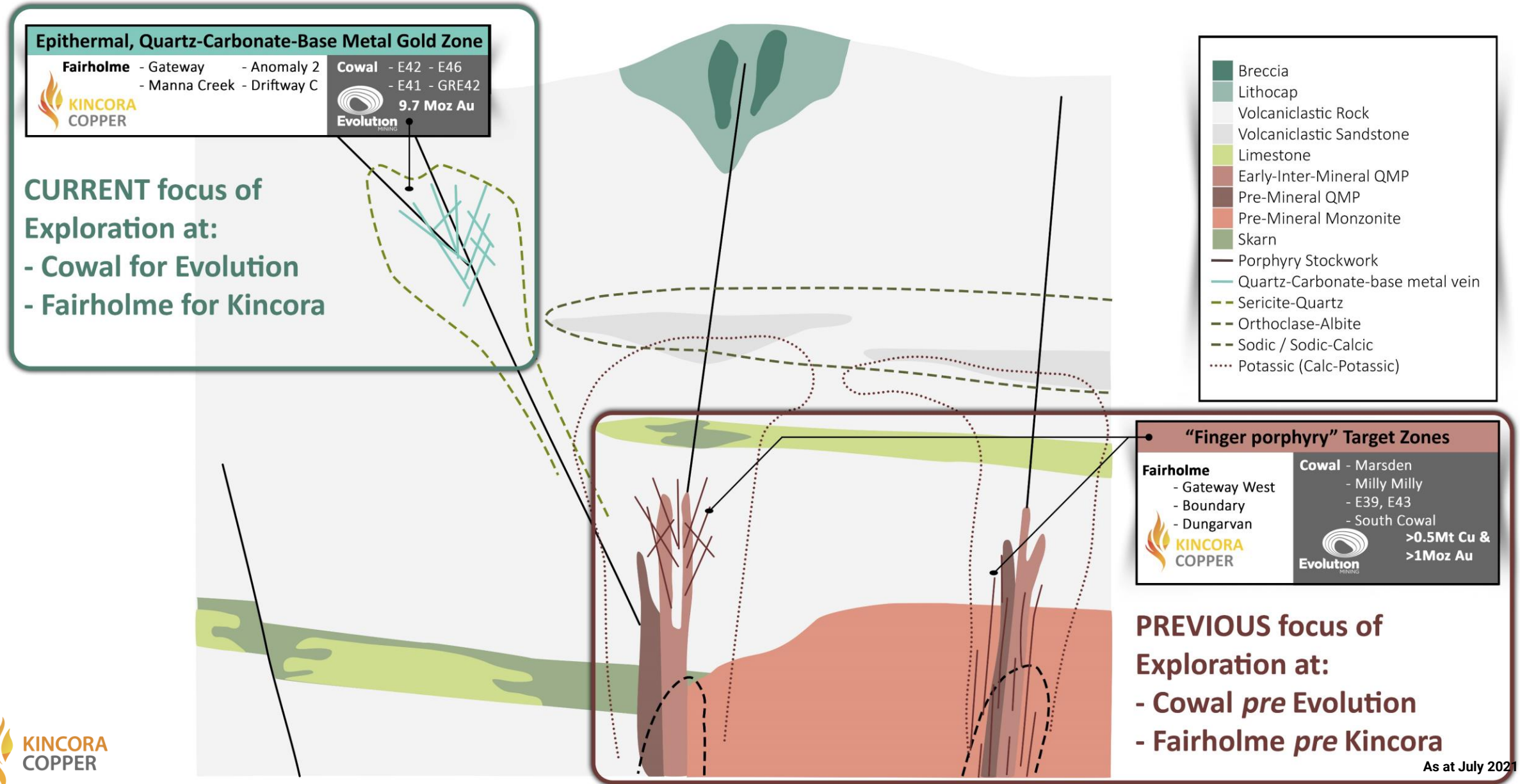


Big, multiple mineralized system footprints

Kincora is looking for another Cowal deposit, following deposit style targets and exploration approaches of

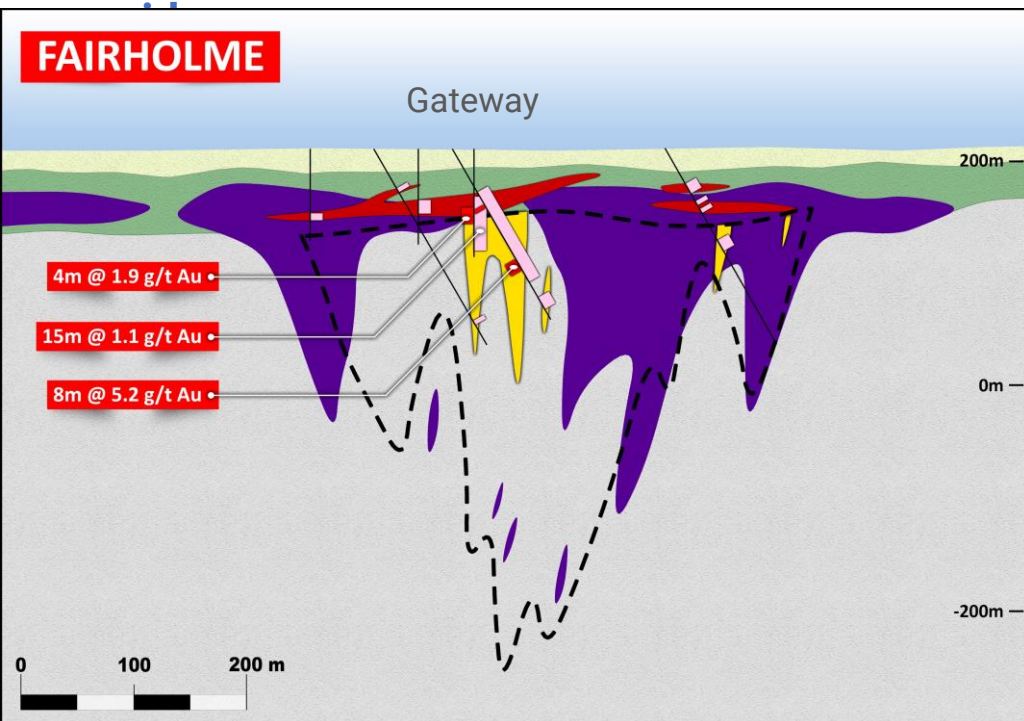


Cowal district geological model and deposit styles

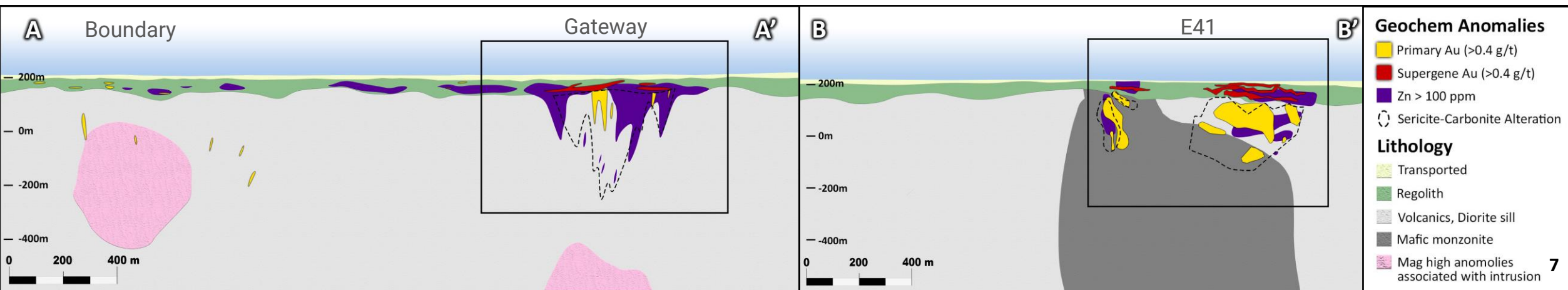
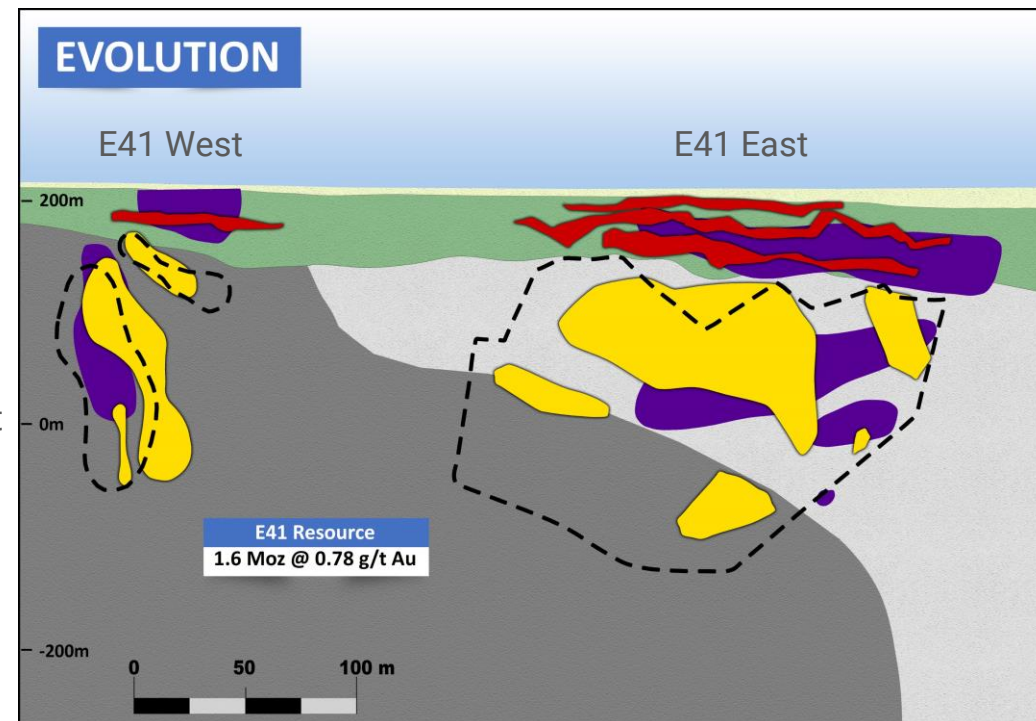


Geological model example for gold corridor systems

Historical intervals at Gateway not followed up or systematically tested until now with hallmarks to Cowal gold



- Analogous setting, scale, zonation and mineralized intervals
- Some with ore grade not followed up
- Priority diamond drilling commenced at advanced exploration Gateway prospect
- Air-core to follow up other targets with anomalous drill results



Players, projects and activity

