

# Kincora Copper Ltd.

## High Impact Drilling

Seeking to confirm new globally significant copper-gold discoveries

ASX/TSXV: KCC

(updated Feb 2023)



## INVESTMENT OPPORTUNITY

### Right Team



- Industry leading technical team
- Track record of major discoveries (eg Tier 1 Cadia and Reko Diq)
- "skin in the game" ownership

### Right Place



- World-class belt >115Moz Au & >30Mt Cu
- World-class mines eg Cadia, Northparkes, Cowal, CSA + infrastructure + mining culture
- Recent significant peer activities and successes

### Right Time



- Funded, high impact next phase of drilling commenced
- 13 large scale copper-gold discovery targets to be drilled in NSW, Australia
- High conviction targets

## CORPORATE SNAPSHOT



Leading pure play porphyry explorer in Australia's foremost porphyry district



Large Scale Copper-Gold Targets  
With strong geological / geophysical vectors



Money in-the-ground  
80% of treasury into exploration



Drilling Grants  
>\$0.6m in total grants awarded



Insider Ownership  
>30% of share register

## FOUNDATIONS FOR SIGNIFICANT VALUE CREATION

**13 large scale copper-gold discovery targets to be drilled in NSW, Australia**

### District scale portfolio

2,367km<sup>2</sup> strategically located on world-class mining belts in NSW

### JORC resource on mining license

pending divestment of Mongolian portfolio

## BOARD & SENIOR MANAGEMENT

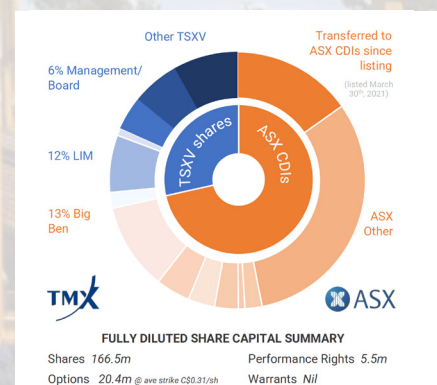
<b>Sam Spring</b>	President & CEO, Director Technical Committee
<b>John Holliday</b>	Non-Executive Director, Technical Committee Chair
<b>Peter Leaman</b>	Senior Exploration VP, Technical Committee
<b>Cameron McRae</b>	Chairman, Director
<b>Lewis Marks</b>	Non-Executive Director
<b>Ray Nadarajah</b>	Non-Executive Director

## CAPITAL STRUCTURE & SHAREHOLDERS

Dual listing on the ASX

Share price	A\$0.08
Issued shares	166.5m
Market cap	A\$12.2m <sup>1</sup>
Cash	A\$3.1m <sup>2</sup>

Share Register Summary \*

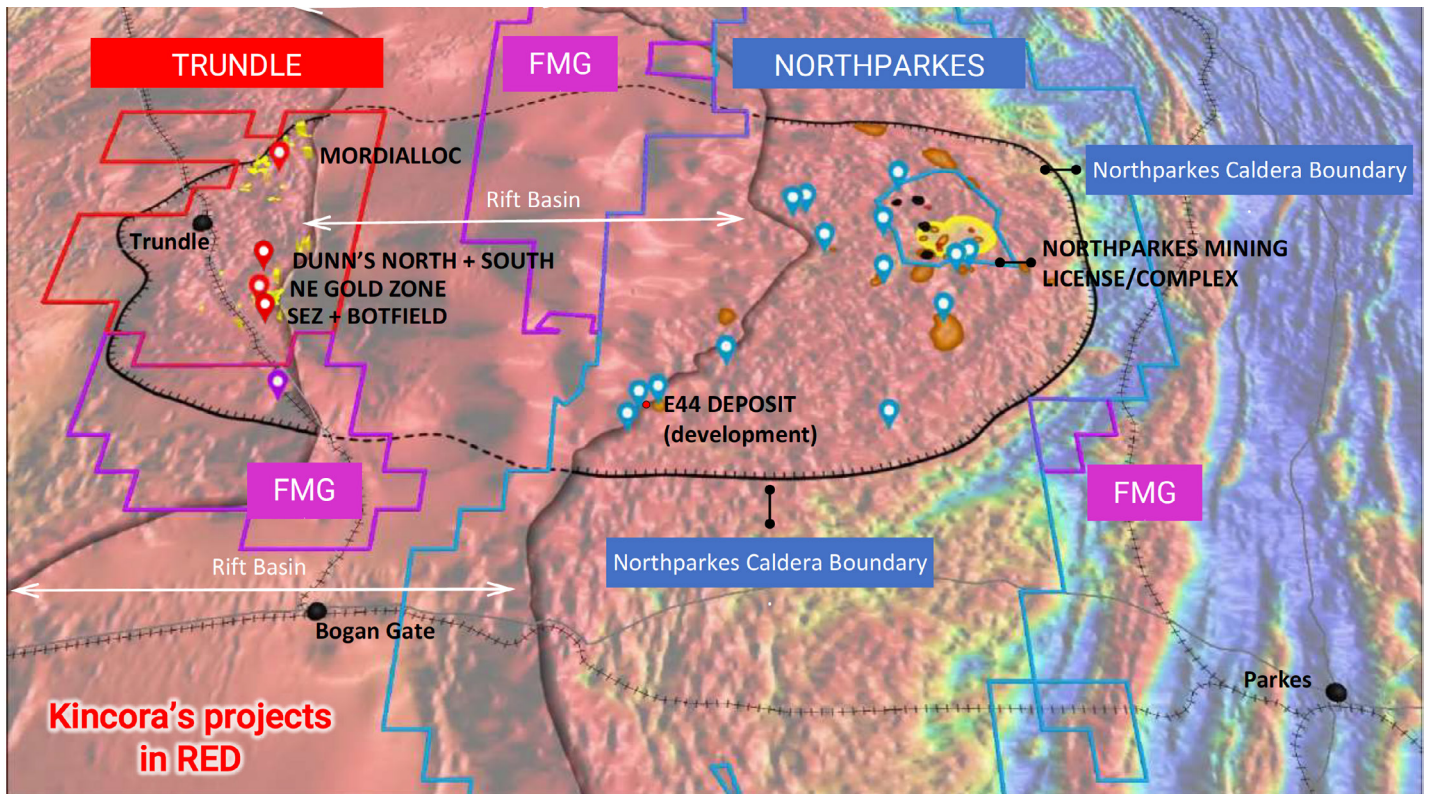


\* Including 2<sup>nd</sup> tranche of Dec'22 placement: shareholder meeting due March, 2023

Transfer of TSVI shares to ASX CDs since ASX IPO & CDI balance as at Jan 4, 2023

## TRUNDLE: QUARTER OF A WORLD-CLASS MINING COMPLEX

Australia's 2nd largest porphyry mine at Northparkes the eastern section of the complex + FMG immediately to the south



## HIGH CONVICTION, LARGE SCALE COPPER-GOLD TARGETS

