

CONDOBOLIN

Potential Hub And Spoke Development Scenario
 Historic Open Pit, High Grade Mining District With Lack Of Modern Exploration



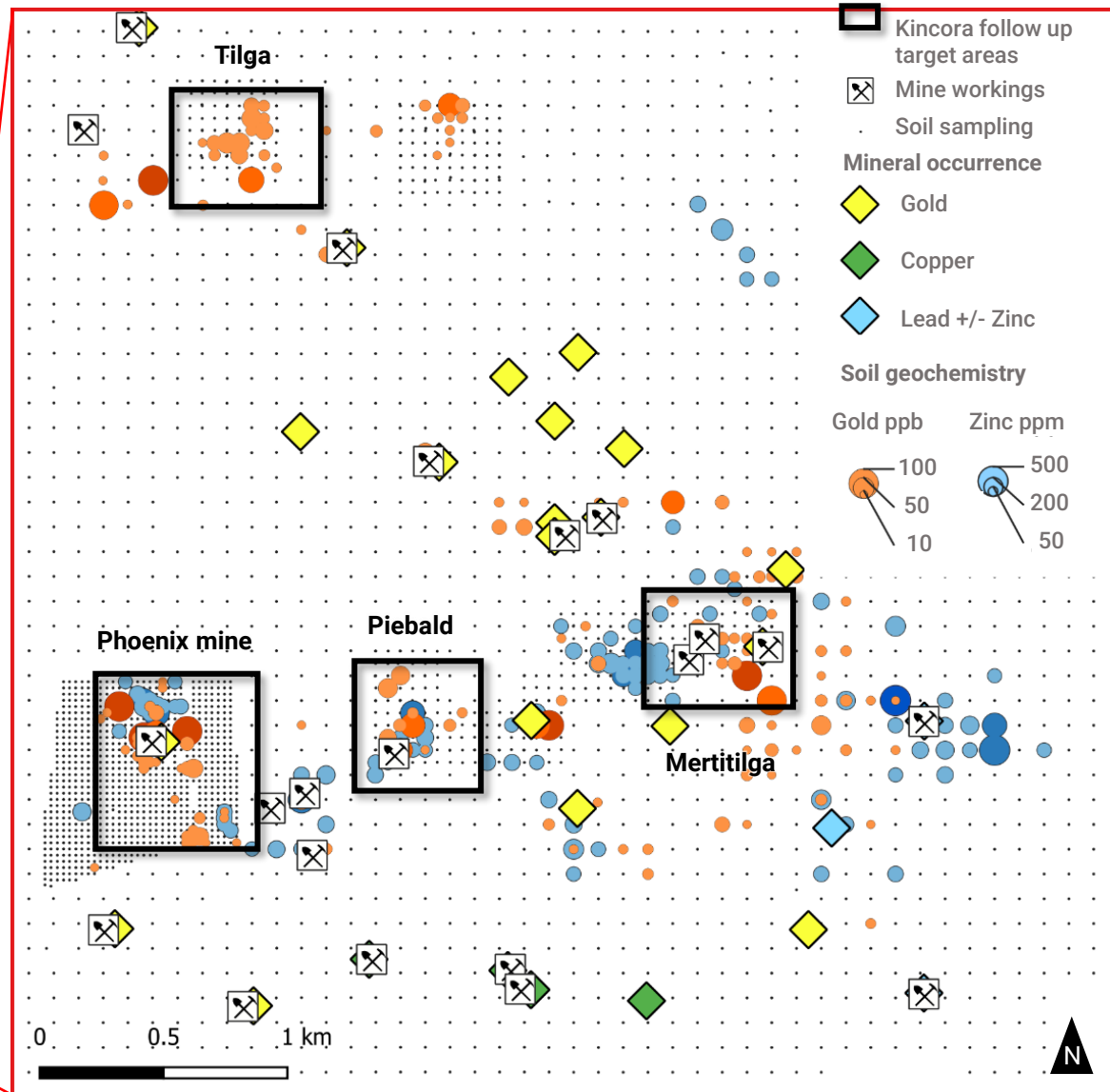
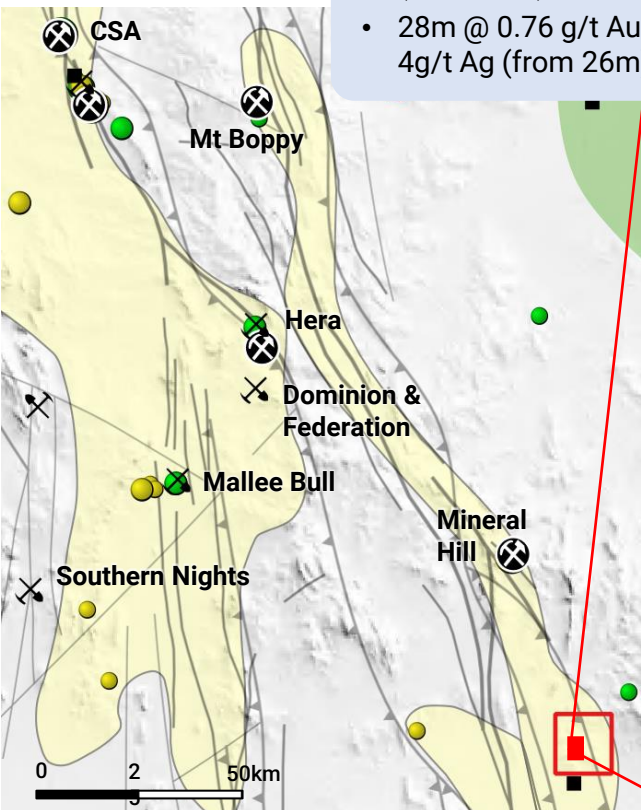
Phoenix mine

- 1893 – 1907
- 6 g/t Au, 5% Cu, 10% Pb
- 70m depth, 10m wide
- Epithermal veins

Meritilga

Previous drilling:

- 5m @ 7.9g/t Au, 22g/t Ag, 14ppm Mo (from 99m)
- 10m @ 5.8 g/t Au, 27 g/t Ag, 0.1% Cu (from 80m)
- 28m @ 0.76 g/t Au, 4g/t Ag (from 26m)



- ✓ High grade gold-base metals Cobar superbasin project
- ✓ Recent significant new discoveries in the Cobar superbasin within underexplored historic mining districts/mineral fields
- ✓ Kincora has consolidated the high grade Condobolin mineral field (including 25 mining pits)
 - Historic Au, Cu, Pb, Ag and Zn mining
 - Not effectively explored below 30m (weathered zone)
 - Mining ceased due to water table
- ✓ Recent first phase program tests new geological concepts at 3 highly prospective targets within a <2km radius
- ✓ High grade, near surface gold targets for follow up at Meritilga, Phoenix & Piebald