



**Kincora Copper Limited**  
*(An Exploration Stage Company)*

**MANAGEMENT'S DISCUSSION AND  
ANALYSIS**

*Expressed in Canadian Dollars*

**FOR THE THREE-MONTH PERIOD ENDED  
MARCH 31, 2024**

**As at May 14, 2024**

## Introduction

The following Management’s Discussion and Analysis (“*MD&A*”) of the Company has been prepared as of May 14, 2024, and reported in Canadian dollars. This MD&A should be read in conjunction with the interim condensed consolidated financial statements of Kincora Copper Limited and the notes thereto for the three-month period ended March 31, 2024, which have been prepared using accounting policies consistent with International Financial Reporting Standards (“*IFRS*”). In addition, the consolidated financial statements have been prepared using the accrual basis of accounting except for cash flow information.

Management is responsible for the preparation and integrity of the consolidated financial statements, including the maintenance of appropriate information systems, procedures and internal controls. Management is also responsible for ensuring that information disclosed externally, including the consolidated financial statements and *MD&A*, is complete and reliable.

Additional information relating to the Company, including most recent financial reports, are available on the Canadian System for Electronic Document Analysis and Retrieval (“*SEDAR*”) at [www.sedar.com](http://www.sedar.com), on the Australian Securities Exchange (“*ASX*”) announcements platform under the Company’s code ‘KCC’ and on the Company’s website at [www.kincoracopper.com](http://www.kincoracopper.com).

## Business Overview

Kincora Copper Limited (the “*Company*” or “*Kincora*”) is an active explorer and project generator focused on world-class copper-gold discoveries. Kincora’s portfolio includes district scale landholdings and scale-able drill ready targets in both Australia and Mongolia’s leading porphyry belts, the Macquarie Arc and Southern Gobi, respectively.

The Company is a leading listed pure play explorer in one of the most significant gold rich porphyry regions in the world, the Macquarie Arc within the Lachlan Fold Belt (“*LFB*”), located in the Central West of New South Wales (“*NSW*”) in Australia. This region has multiple world-class mining operations, an established exploration and mining culture, excellent existing infrastructure, a supportive government environment and multiple recent private sector exploration, development and mining successes.

Kincora has assembled an industry leading technical team who have made multiple world-class copper and gold discoveries, who have “*skin in the game*” equity ownership, and, backed by a consolidated and sophisticated shareholder register (insiders owning over 45% of the Company, with the top 10 shareholders approximately 60%).

During 2023, Kincora made three major shifts in corporate strategy to lay the foundations to create and realize value from its two district-scale porphyry project portfolios.

The first step taken was the strategic review process for the wholly owned Mongolian portfolio, following the Company’s focus having pivoted to NSW in 2019/2020 and with recent activities having capital efficiently advanced the Mongolian portfolio (including securing a mining license, announcing a maiden JORC resource and updated exploration target, and, making a new (third) intrusive complex discovery). This divestment process is ongoing and further announcements will be made as and when material developments are made. Field season activities, completed in 4Q’2023, met expenditure and community requirements, and have advanced four porphyry copper deposit targets and one epithermal gold target, including at a newly identified and regionally significant intrusive complex (Shuteen North).

The second major shift in strategy was Kincora securing 100% ownership across all of the Australian projects (announced 3Q’2023, closed December 2023), concurrent with a strongly supported A\$2 million capital raising. Consolidating the project ownership and removing the prior carried interests increases the strategic value and

attractiveness of the projects and Australian project portfolio. This portfolio already attracted interest from mid-tier and industry majors.

Importantly this development enables a third leg to Kincora's action plan, providing for a potential pivot in funding strategy and investors at the asset level, not solely at the listed company level. It is also a catalyst for on-going discussions and negotiations. The fundamental motivator is unlocking and providing a path for realising value for shareholders (with different potential structures for each project).

Drilling during 2023 at the Trundle project, and our maiden program at the Condobolin project, provided significant encouragement, strongly supporting follow up activities. All Australian projects have designed high impact drill programs.

Our exploration alliance partner, Earth AI, is anticipated to shortly commence a maiden drilling program at the Cundumbul project (at its cost), and follows recent encouragement for Earth AI at two other NSW projects it has drilled at in the last 12 months. This program at Cundumbul will test the porphyry potential associated with anomalous copper geochemistry from outcropping hydrothermal breccias and skarns. The success-based exploration alliance seeks to leverage Earth AI's proprietary artificial intelligence and machine learning technology for generating, funding and drill testing targets, with Kincora retaining 100% ownership of the project.

The Company remains extremely bullish on the medium to longer-term fundamental outlook for copper. The industry has seen multiple billion dollar M&A in NSW during 2023, from the exploration stages (eg AngloGold Ashanti's earn-in with Inflection Resources adjacent to Kincora's Northern Junee-Narromine Belt project, S2 Resources earn-in with Legacy Minerals for the Glenloghan porphyry project, Waratah acquisition of the Cargo porphyry project, DevEx's A\$7.5 million sale plus royalty for its NSW porphyry projects, AGC's A\$10m strategic investment from Delin etc) to producing mines (eg Evolution Mining's acquisition of 80% of Northparkes for up to A\$720m, A\$1.3b sale of the CSA mine (supporting Metals Acquisition's recent dual listing and A\$325m raising on the ASX), and, Newmont's acquisition of Newcrest and earn-in agreement with Legacy Minerals).

The Kincora corporate office is in Vancouver, and operating offices in Ulaanbaatar (Mongolia) and field camps in Trundle (NSW) and the Southern Gobi (Mongolia).

The Company is a reporting issuer in Ontario, British Columbia and Alberta, Canada, with its common shares trading on the TSX Venture Exchange and Chess Depositary Interests ("CDIs"), trading on the ASX under the symbol **KCC**. As at April 5<sup>th</sup>, 2024, the Company has 42.2 million shares listed on the TSX Venture Exchange and 204.97 million CDIs on the ASX.

For further information please refer to our website: [www.kincoracopper.com](http://www.kincoracopper.com), with detailed project level summaries and presentations available under the "Projects" tab.

[In all aspects of our business, the Company retains our focus on the safety and wellbeing of our staff, engaging with stakeholders and creating shareholder value.](#)

## Operational and Corporate Highlights

*Highlights for the three-month period ended March 31, 2024 include:*

- **New project, Wongarbon:** *In February 2024, Kincora pegged the Wongarbon project (ELA6708) as open ground. The new project is considered a compelling untested Macquarie Arc porphyry target with immediate high priority targets for drilling.*

Highlights for the year ended December 31, 2023 include:

- **Extensive multiple system porphyry complex expanded at the Trundle Project:** All five diamond holes of the 2023 Trundle project program have confirmed an extensive multiple system gold-copper complex. Four adjacent mineralised system targets were tested with shallow higher grade and broad gold-copper mineralised zones returned.

A 3.2km gold-copper mineralised strike remains open to the north and south, confirmed up to 900m wide (open) and a vertical depth of greater than 800m, from the Botfield-Trundle Park-Dunn's target areas. Neighboring explorers drilling during 2023 included: (1) immediate northwest (Rimfire), testing the potential extension of the Mordialloc prospect and mineralised system;(2) south (FMG), testing the potential extension of the Dunn's-Trundle Park-Botfield mineralised systems: and, (3) at the E44 satellite deposit at Northparkes (a skarn system anomalous to the Trundle Park prospect).

Kincora has refined high priority porphyry targets for drilling in the northern and southern sections of the Trundle project and, following consolidating 100% interest in the project in December 2023, is in discussions with potential asset level funding partners.

- **Maiden Kincora drilling programs completed at the Condobolin and Nevertire Projects:** Drilling at the Condobolin project tested new geological concepts at existing high grade and shallow gold-base metal targets at the Meritilga, Phoenix and Tilga prospects. Results at the Meritilga prospect were particularly encouraging including:
  - 110m @ 0.28 g/t gold and 8.73 g/t silver from 10m, including:
    - 9m @ 1.28 g/t gold and 78.8 g/t silver from 39m, including:
      - 1m @ 9.1 g/t gold and 530 g/t silver from 46m, and;
    - 14m @ 0.87 g/t gold and 3.3 g/t silver from 78m, including:
      - 1m @ 8.3 g/t gold and 9.0 g/t silver from 87m

High grade, near surface gold drill targets have been identified for follow up in addition to a district scale geophysical program across the full Condobolin Base Metal District.

The first hole ever drilled to basement at the Nevertire project was completed with co-operative funding grant support from the NSW government with post drilling analysis observing that the core of the primary large-scale magnetic target was not intersected and remains open for further testing.

- **Field Work at the Cundumbul Project:** The Company's artificial intelligence and machine learning exploration alliance partner Earth AI Pty. Ltd. ("Earth AI") completed multiple phases of reconnaissance fieldwork at the Cundumbul project. These programs have outlined an anomalous copper zone, and assisted, confirm and refined target assessments, with permits and land access in place for drilling.

A three-hole drill program, funded and operated by Earth AI, to test both copper porphyry and skarn targets are anticipated to commence in the next quarter utilizing Earth AI's in-house diamond drill rig.

- **New insider and board changes:** Following shareholder approvals for tranche two of the December 2022 capital raising, The Bloomfield Group became an insider of the Company with a 12.9% shareholding.

Luke Murray, Chief Operating Officer of The Bloomfield Group, joined the Company's board in March 2023 as a non-executive director and brings senior executive experience in open cut mining, processing, logistics and permitting in NSW to the Kincora team. Concurrently, Lewis Marks stepped down as a non-executive director, but remains as an advisor to the Company.

- **Asset level restructure and capital raising:** *On December 15, 2023, Kincora announced that it has completed the acquisition of RareX's minority and carried interest in various projects to now have 100% ownership in the entire NSW project portfolio.*

*Associated with the acquisition, the Company completed an oversubscribed private placement to raise A\$2 million via the issuance of 40.6 million new CDIs at A\$0.05 per share (C\$0.044). This placement was closed on August 8, and includes a one (1) for two (2) free-attaching option exercisable at A\$0.075 (C\$0.065) and expiring 24-months from the issue, with all new shares and options issued.*

*Concurrent with the RareX Transaction, Mr. Jeremy Robinson has joined the Kincora's Board as a Non-Executive Director and member of the Company's Remuneration Committee.*

- **Mongolian Supreme Court hearing:** *Following conflicting rulings in the lower levels of the Mongolian courts relating to tax dispute with the Mongolian Tax Authority ("MTA"), involving a prior tax assessment and payment in 2016 that was relied upon to close a merger transaction, Kincora's appeal to the Supreme Court was accepted and case heard in May 2023. The Supreme Court referred the dispute back to the first level of the Mongolian judicial system with a review ongoing of the reassessment by a panel of independent experts as Kincora separately pursues criminal charges against MTA officials, has drafted a proposed mutually beneficial settlement for the tax dispute and sought engagement with appropriate senior Government of Mongolia officials.*
- **External strategic review process and 2023 field work for Mongolian portfolio:** *In June 2023, Kincora advised that following the receipt of several unsolicited enquiries that the Company had commencement an externally led strategic review process for the Mongolian asset and license portfolio with the view of maximizing shareholder value and streamlining focus toward the core NSW project portfolio.*

*The externally led review resulted in a confidential and incomplete offer that included the receipt of a non-refundable deposit. That proposed transaction has not proceeded, however the divestment process is ongoing and further announcements will be made as and when material developments are made.*

*Field season activities, completed in 4Q'2023, included mapping, soil and rock chip sampling, meeting expenditure and community requirements, and capital efficiently advancing four porphyry copper deposit targets and one epithermal gold target, including at a newly identified and regionally significant intrusive complex (Shuteen North).*

#### **Subsequent to period end**

*No subsequent event.*

## Macquarie Arc, Australia portfolio

Kincora holds district scale positions within highly prospective settings on the key belts of the Macquarie Arc.

The corporate appeal of the district is evident from the multiple billion dollars of M&A during 2023; from one of the world's most profitable hard rock projects (Cadia), to multiple significant exploration focused transactions.

Kincora's projects:

- Sit in highly prospective locations of the key belts of the Lachlan Fold Belt
- Are at advanced stages of exploration and/or host large scale footprints
- Demonstrate hallmarks of neighboring world-class deposits
- Benefit from existing infrastructure and favourable ESG considerations

Having successfully run a strategic review and pending divestment for Kincora's wholly owned Mongolian porphyry projects and recently buying out the original project vendor for its NSW projects, Kincora in December 2023 consolidated a 100% interest in all its NSW projects.

This strategy supports attracting potential asset partners for our Tier-1 scale copper-gold porphyry projects. These core projects include Trundle, Fairholme (+/- Jemalong), the Northern Junee-Narromine Belt portfolio (Nyngan, Nevertire and Mulla) and recent pegging of the Wongarbron project.

Exploration alliance partner, Earth AI, is scheduled to commence drilling in the next quarter (at their own cost) at the Cundumbul project, which follows recent exploration success at two other NSW projects in 2023, with Kincora's drilling at the Condobolin project in 2023 returning encouraging results.

All NSW projects have designed drilling programs offering company making upside supported by strong technical merits in highly prospective locations and within established mineral belts.

Further details on the NSW project are also available at:

<https://kincoracopper.com/lachlan-fold/> including an accompanying detailed summary presentation (December 2023).

### **Trundle Project**

The Trundle project is located in the Junee-Narromine volcanic belt of the Macquarie Arc, and between the Northparkes mine, Australia's second largest porphyry mine, and the Sunrise Energy Metals' large, low cost, long life Sunrise development stage, battery materials complex which is in immediate proximity to the Platina scandium project (latter acquired by Rio Tinto in 2023).

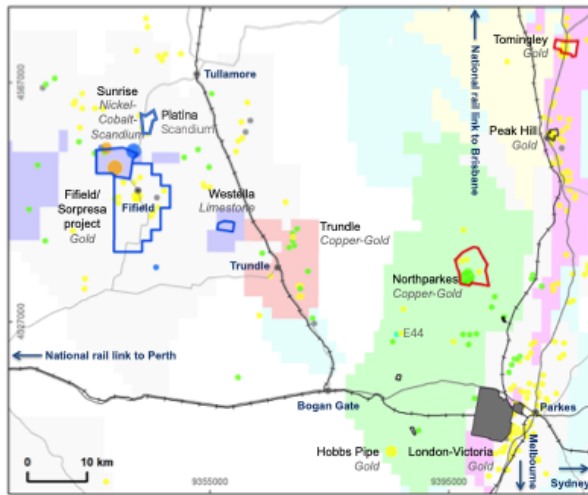
During 1H'2023, two neighbouring explorers also undertook drilling at the western and southern extensions of the Trundle project. Fortescue Metals Group ("FMG") completed drilling immediately adjacent to the south, testing the potential southern extension and associated magnetic anomalies of the 3.2km mineralised and magnetic corridor Kincora drilled during 2023 testing at the Dunn's-NE Gold Zone-Botfield prospects. Rimfire Pacific Mining completed a two rig program on the neighbouring western license, one drilling its Valley target adjacent to the northern section of the Trundle project, testing the western undercover extension of Kincora's Mordialloc target.

Historically small base metal and gold occurrences were mined at the Trundle project with a combination of open cut and underground workings. Numerous groups have carried out mineral exploration over the last 40 years (the last prior to Kincora being Robert Friedland's High Powered Exploration, a predecessor company to Ivanhoe Electric Inc (NYSE American: IE; TSX: IE), until the last commodity cycle downturn) focusing on

porphyry copper-gold mineralisation associated with shoshonitic Ordovician igneous rocks like those at Goonumbra (Northparkes) and Cadia.

A total of 61,146m for 2208 holes of prior explorer drilling, mainly air-core, has taken place with over 90% of holes within 50m from surface. Extensive near surface mineralisation has been defined along a 10km north-south strike length with coincident (and largely untested) magnetic anomalies. Prior to Kincora only 11 holes have previously been drilled to depths greater than 250m.

Kincora has recognized that despite various positive indicators supporting deeper drilling that there had been a lack of drilling to intersect porphyry systems at depths similar to those at Cadia (>90Moz AuEq, host to five main porphyry and two skarn deposits), Northparkes (>24Moz AuEq, host to 22 porphyry discoveries, 9 of which have positive economics) and/or the more recent Boda-Kaiser discoveries (14.8Moz AuEq and growing).



- Between (1) Northparkes, Australia’s second largest porphyry mine, and (2) Sunrise Energy Metals’ large, low cost, long life Sunrise development stage, battery materials complex which is in immediate proximity to Platina’s scandium project (latter subject to cash acquisition by Rio Tinto in 2023)
- Close to existing major infrastructure, incl. national logistics hub and inland rail at Parkes
- Sealed and unsealed roads traverse most of the license area servicing predominately farming properties and the town of Trundle
- Active immediate regional exploration groups: CMOC/Sumitomo, Fortescue, Sunrise, Alkane, Rimfire Pacific, Magmatic and Kincora

<b>License owners</b>	<b>Infrastructure</b>	<b>Mineralization</b>
<ul style="list-style-type: none"> <li>Kincora</li> <li>CMOC/Sumitomo</li> <li>Sunrise</li> <li>Alkane Res</li> <li>FMG</li> <li>Sandfire</li> <li>Title Applications</li> <li>Other</li> </ul>	<ul style="list-style-type: none"> <li>Township</li> <li>National logistics hub and inland rail</li> <li>Operating mine</li> <li>Development project</li> <li>Non operating mine</li> <li>Railways</li> <li>Major road</li> <li>Secondary road</li> </ul>	<ul style="list-style-type: none"> <li>Copper</li> <li>Gold</li> <li>Lead</li> <li>Nickel</li> <li>Zinc</li> <li>Large deposit</li> <li>Moderate deposit</li> <li>Occurrence</li> </ul>

**Figure 1: The Trundle project is centered between potentially two long life mining projects, including Australia’s second largest porphyry mine (+ Rio Tinto’s recent acquisition of Platina’s scandium project)**  
 The central west of NSW is an agricultural, mining, infrastructure and rail hub

Subsequently, Kincora’s approach has been to develop a detailed 3D model to advance and refine geological interpretations, to identify mineralised trends, then rank and test targets. A key advancement has been the development of this 3D working model, based upon the observed and updated geological logging, and also incorporating the structural, alteration, geochemical and mineralogical results, coupled with geophysical inversions. This significantly improved geological understanding and has both guided and justified deeper drilling.

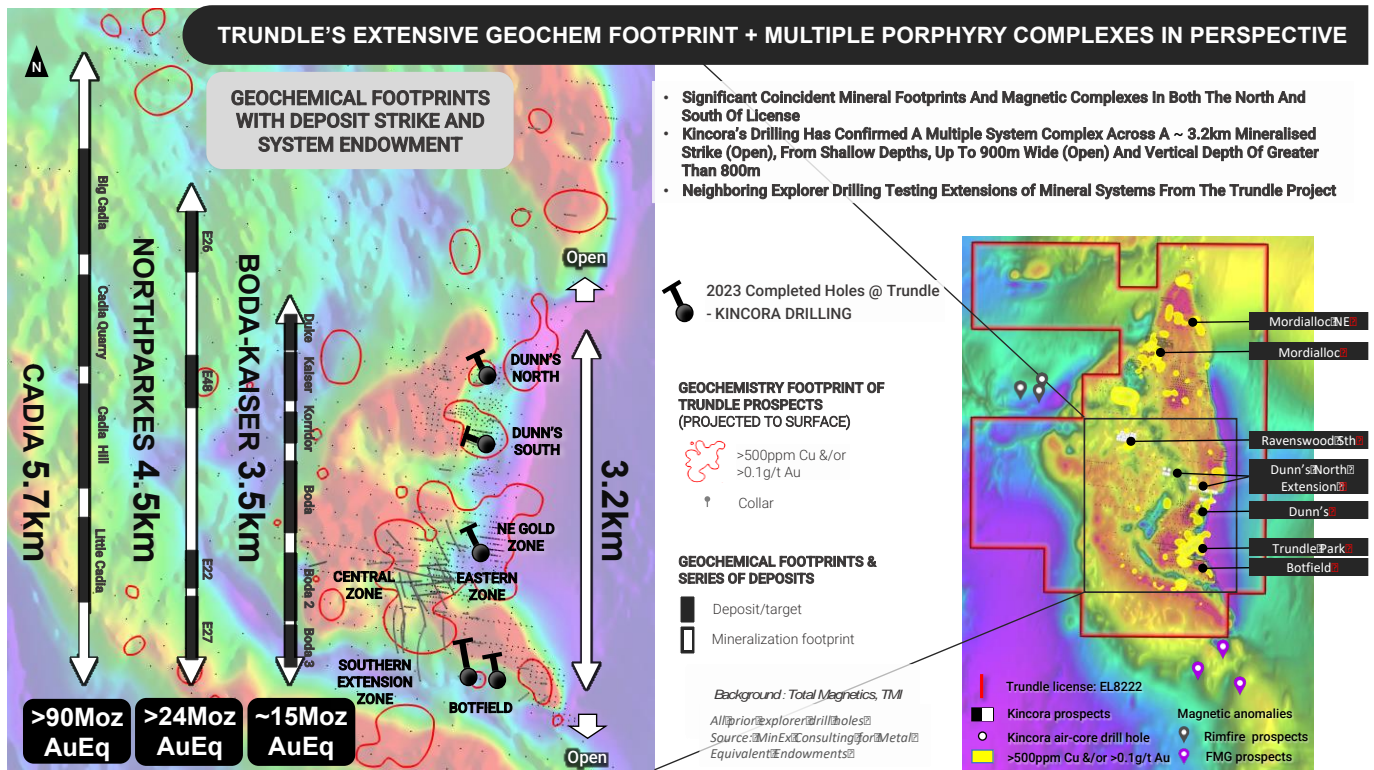
Before the 2023 phase of drilling, Kincora had completed 34 diamond holes for 23,513m with a focus in the southern portion of the license at the Trundle Park prospect with 25 holes and 16,224m (up to 1,032m depth). To date, Kincora has discovered two new porphyry intrusion areas (the Eastern and Central Zones) with associated skarn horizons, and more recently a down faulted extension to the wider system to the south - the “Southern Extension Zone” (“SEZ”).

The skarn system at the Trundle Park prospect is currently believed to be one of the largest mineralised skarn systems in NSW, with the size of the skarn system providing significant encouragement for the size and metal tenor of the causative porphyry sources.

In late 2022, Kincora announced the highest primary mineralisation to date at the Trundle project in hole TRDD032 which returned: 34m @ 1.45 g/t Au, 0.25% Cu in skarn, including an interpreted porphyry vein that

drove 2m at 19.9 g/t Au, 2.43% Cu, within a broad interval of 104m @ 0.59g/t Au and 0.11% Cu. While the interpreted porphyry vein in hole TRDD032 was less than 5 milimeters width, it was very high grade, within a 40cm semi-massive interval that drove the 19.9g/t Au and 2.43% Cu over a 2 metre sample. The newly identified and interpreted first direct porphyry vein in the SEZ provides strong evidence for potential ore grade porphyry vein mineralisation.

Prograde and retrograde skarn alteration and mineralisation have been returned in all four holes to date within the SEZ (holes TRDD029-32), with no causative porphyry intrusive source yet confirmed. Ore grade gold-copper in skarn has been intersected within the SEZ over a 330m SSE strike and 225m W-E wide system, which is open, with drilling in 2023 extending this system across a major regional fault into the Botfield prospect. The intersected tabular, bedded, mineralised skarn system across multiple horizons (with greater than 120m cumulative skarn widths in three of the four holes in the SEZ) has assisted to provide various geological vectors for follow up drilling.



**Figure 2: Kincora 2023 drilling at Trundle has confirmed an extensive multiple system gold-copper complex**  
 A 3.2km gold-copper mineralised strike remains open to the north and south, confirmed up to 900m wide (open) and a vertical depth of greater than 800m

Kincora's 2023 completed drilling program included 5 diamond holes for 1,972m testing four adjacent mineral systems (see Figure 2). All holes have intersected zones of gold-copper mineralisation at shallow depths with broader lower grade intervals and localised higher grade intervals, supporting the concept for a cluster or series of standalone porphyry deposits.

Highlights include:

- **Dunn's North** - hole TRDD035: 12.5m @ 2.77g/t gold from 77.5m, including 2m @ 14.2g/t gold
  - First Kincora hole at the Dunn's North prospect



- Multiple phase mineralised complex with porphyritic quartz-sulfide veins occurring in both near surface intrusive bodies and volcanic sandstone wall-rock
- Geophysical profile and target explained with the original geological target failed to be tested and remaining open
- **Dunn’s South** – hole TRDD036: 44.4m @ 0.36g/t gold, 0.19% copper and 41ppm molybdenum from 52.5m, including:
  - 8.6m @ 1.21g/t gold, 0.26% copper and 90ppm molybdenum from 65.9m
  - 4.5m @ 0.50g/t gold, 0.79% copper and 180ppm molybdenum from 92.4m
- First Kincora hole at the Dunn’s South prospect, drilled ~640m south of TRDD035 at Dunn’s North
- Multiple phase intrusive complex with zones of higher gold-copper and molybdenum grades suggesting a proximal setting
- Geophysical profile and target explained with the original geological target failed to be tested and remaining open
- **North-East Gold Zone** - TRDD038: 135.5m @ 0.23g/t gold, 0.02%, 10ppm molybdenum from 220.5m
  - A step out hole that has returned the strongest and longest interval of potassic alteration with sulphides at the Trundle project
  - Associated with both multiple phase intrusions and adjacent volcanoclastic wall-rocks, including a molybdenum zone near end of hole
- **Botfield** – hole TRDD037: First Kincora hole at the Botfield prospect and testing a regionally significant magnetic anomaly
  - High grade veins and mineralised skarn from 112m and 330m vertical respectively:
    - 2.9m @ 0.95% Cu, 0.62g/t Au (from 129-132m), including 0.9m @ 2.24% Cu, 1.75g/t Au
    - 31m of magnetite skarn hosted anomalous gold and copper (from 393-424m)
  - Working interpretation is the western portion of Botfield is an uplifted block (~500m) in comparison to the similar and adjacent magnetite skarn intervals at the SEZ discovery
- **Botfield** – hole TRDD039: Follow up to TRDD037 stepping out 260m to the east.
  - High grade veins and mineralised skarn from 80m and 240m vertical respectively:
    - Strong hydrothermal hematite-silica alteration overprinting feldspar altered volcanoclastic conglomerate and coarse banded chalcopryrite-pyrite vein (from 92-94m) with 4m @ 0.17 g/t Au, 0.28% Cu
    - ~40m of retrograde magnetite (massive) skarn with 25m @ 0.10g/t Au, 0.07% Cu (from 270m vertical depth), cut by carbonate-chalcopryrite veining at 288.6m downhole.
  - Working interpretation is that the skarn system at Botfield continues towards (and also to surface) the east and is associated with historical informal workings on its most eastern limit

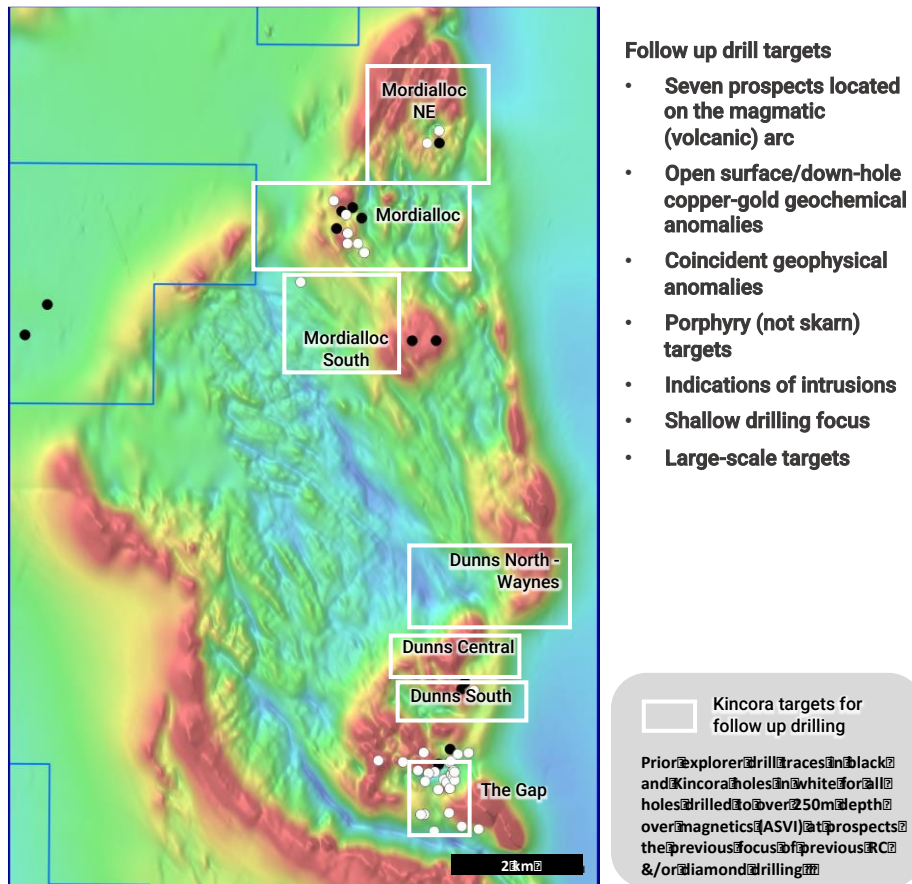
The causative porphyry source and fluid pathway is yet to be confirmed for the >900m NW-SE trending mineralised magnetite skarn intersected by Kincora drilling in the SEZ and Botfield prospects (open on strike and depth). Alteration and garnet zone zonation, coupled with metal tenure and interpretation of regional structures also supports an untested 750m N-S by 200m E-W corridor (named “*The Gap*”), and open further to the south, that remains prospective for causative porphyry intrusions and the source of the mineralisation in the skarns.

Assay results returned, and detailed geological logging of all holes from the 2023 program are suggestive of an interpreted proximal setting to the targeted porphyry intrusions. The observed alteration and mineralisation at each prospect drilled during this program are interpreted to be analogous to a proximal setting in comparison to the deposits at Northparkes and Cadia mines. This setting, coupled with the coincident magnetic response, across a long strike, and open both to the north and south, supports the Company’s concept that the southern portion of the Trundle project has the potential for a series or cluster of high-grade and gold endowed porphyry copper and skarn deposits.

Follow up air-core and diamond drill hole programs have been designed to test for open porphyry type mineralization at up to seven prospects, from the north and towards the south of the license:

- To expand the geochemical foot print for copper-gold and search for intrusions through bedrock mapping by way of shallow (to basement) air core drilling at the Mordialloc South and Dunns North-Waynes’s target areas, in turn helping to focus deeper level drilling under anomalous areas.
- Existing prospect anomalous surface and down-hole gold-copper results at Mordialloc NE, Mordialloc, Mordialloc South, Dunn’s North-Waynes, Dunn’s Central, Dunn’s South and The Gap (between Botfield and the SEZ) by way of diamond drill testing below target areas

Discussions with potential asset level partners continue, assisted by Kincora securing 100% ownership of the project in December 2023.



**Figure 3: Seven large-scale, separate porphyry prospects identified for follow up drilling**

In December 2023, Kincora consolidated a 100% interest in the Trundle project

For further details on Kincora’s results and technical disclosures from the Trundle project please refer to the March 21<sup>st</sup>, 2023 “*Drilling at Trundle intersects shallow mineralisation*” and May 10<sup>th</sup>, 2023 “*Extensive multiple system porphyry complex confirmed at Trundle*” press releases.

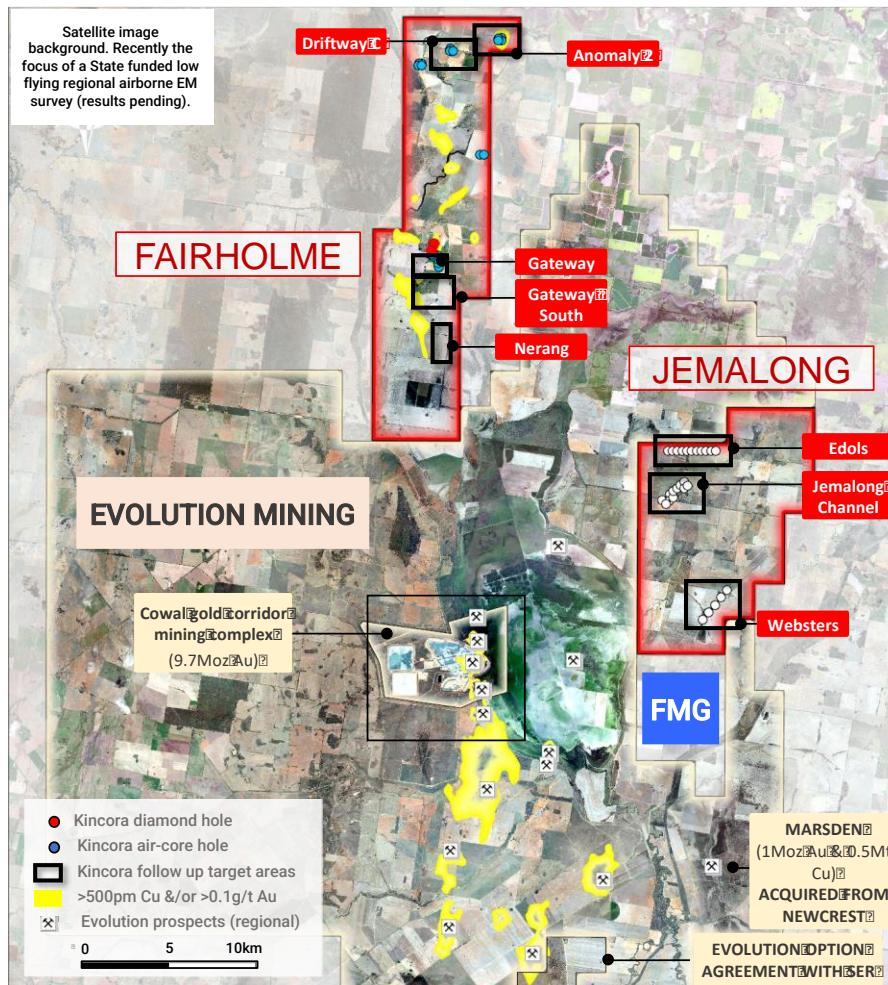
Further details on the Trundle project, and neighbouring Northparkes mine, are also available at:

[https://kincoracopper.com/the-trundle-project-including-an-extensive-project-level-presentation \(December 2023\)](https://kincoracopper.com/the-trundle-project-including-an-extensive-project-level-presentation-december-2023).

***Fairholme Project***

The Fairholme project is located in the southern sector of the Junee-Narromine Belt of the Macquarie Arc in the Cowal block with license contiguous to Evolution Mining’s flagship Cowal project.

The Cowal mine hosts a cluster of epithermal, quartz-carbonate-base metal-gold mineralization deposits across a 7.5 x 2km north-south oriented and structurally controlled “gold corridor”, located on the western edge of Lake Cowal.



**Figure 4: Fairholme – On mineralised trend and adjacent to the Cowal “gold corridor” and mine**  
The wider Cowal project hosts a approximately 15Moz gold and 0.5Mt copper endowment

Modern exploration in the Cowal region commenced following the discovery of porphyry mineralization in Goonumbla district (Northparkes), seeking to test a similar geophysical profile under generally shallow post mineral cover, with the large low grade E39 porphyry discovery and then Newcrest’s discovery of the Marsden porphyry deposit within the Cowal block (>0.5Mt copper and >1Moz gold). Newcrest undertook the majority of drilling at Fairholme, total prior explorer drilling 62,768m for 641 holes, between 1990-2005.

The last exploration prior to Kincora’s involvement at Fairholme was by Kaizen Discovery earning into the project (an Ivanhoe Electric group company, chairman Robert Friedland). Despite Kaizen recognizing the potential for Cowal style gold deposits (including prior results such as 8m at 5.2g/t Au and 6m at 1.4g/t Au from 114m and 60m depths respectively) its focus was the copper porphyry potential and undertook exploration to moderate-deep depths (including Typhoon™ Induced Polarization/Resistivity survey, magnetics and drilling). Kaizen left the project at the start of the last commodity cycle downturn (March 2016).

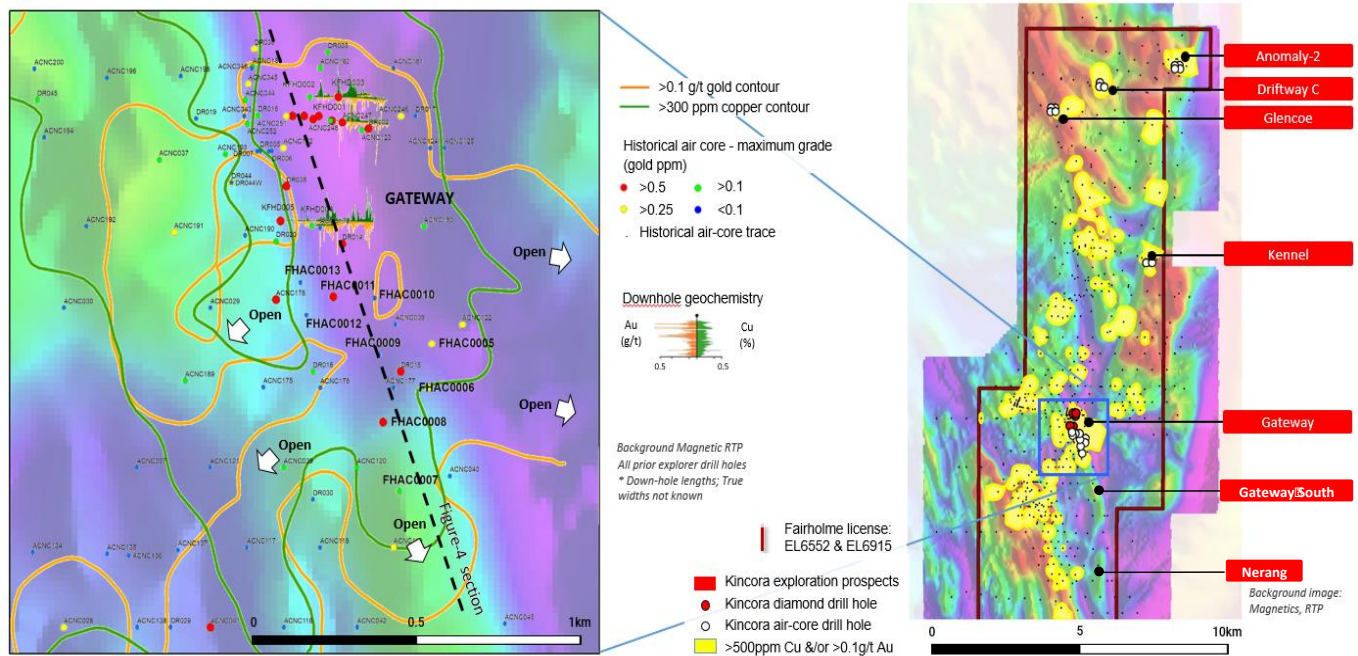
In 2015, Evolution Mining acquired the Cowal mine from Barrick and has since grown gold inventory from 3.4Moz to 9.7Moz (net of 1.7Moz mine depletion), with a target total endowment of approximately 15Moz Au (noting total historical production of 4Moz gold).

Previous explorers have largely underestimated the scale potential of the gold corridor at Cowal, and no drilling (prior to Kincora) has taken place at Fairholme since Evolutions rapid resource growth with the regions higher level gold endowment now far outshining the deeper copper porphyry potential (the latter generally the focus of previous explorers).

The Fairholme project is host to a number of advanced to early-stage exploration prospects across a 16km north-south mineralised strike, with relatively limited effective previous drilling having identified multiple and large intrusive related mineralised systems. Kincora’s strategy is not restricted to focusing on copper porphyry targets, and seeks to benefit from the various exploration techniques and successes achieved by Evolution at Cowal and other modern exploration techniques applied within the Macquarie Arc.

Kincora’s initial drilling program at the Fairholme project included completion of five diamond holes at the Gateway prospect located less than 15km along strike from the five epithermal, carbonate base-metal deposits that comprise the Cowal mine.

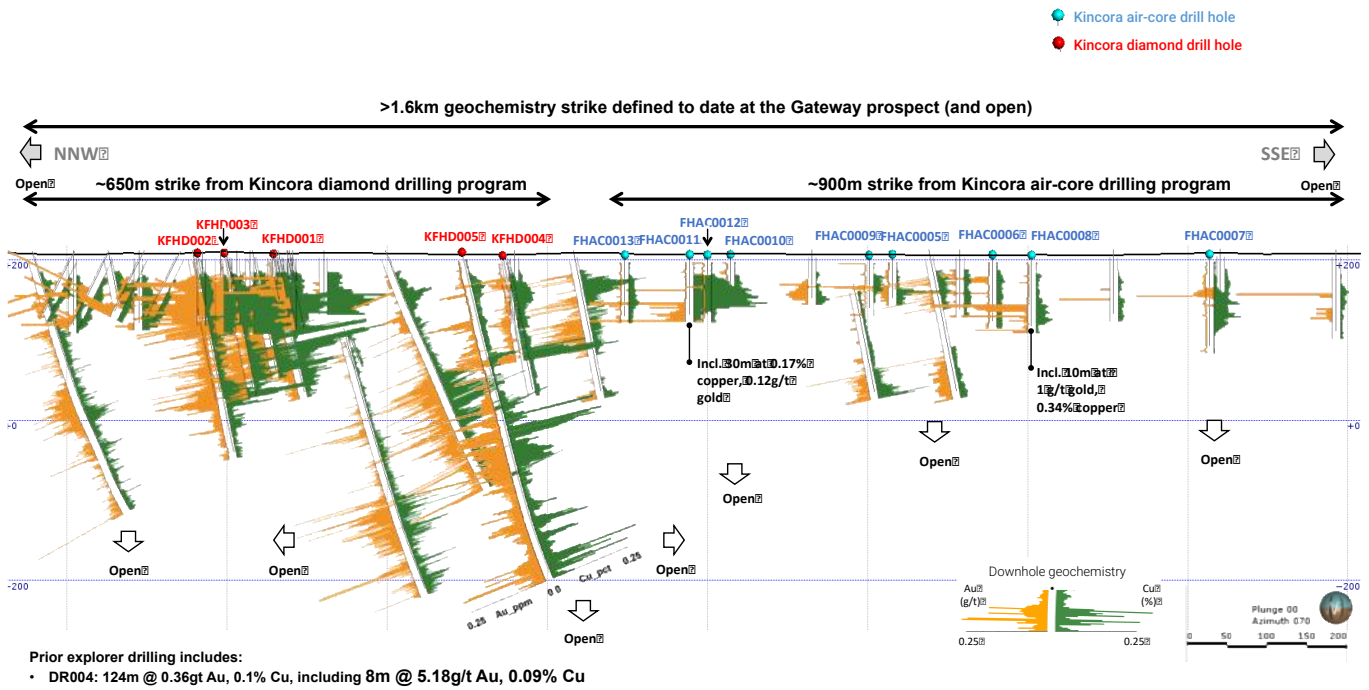
This Kincora program was completed in 2021, identifying zonation and controls to mineralisation with a mineralised system confirmed over 600m in strike. These results assisted with the design of a second phase and follow up air-core drilling program (completed in late 2022), which successfully both extend the southern mineralised trend and strike, and confirmed higher-grade potential.



**Figure 5: Gateway prospect strike >1.6km with vectors**

Recent drilling returned anomalous gold and copper in all nine holes, including the 5th highest grade air-core interval to date at the Fairholme project (3.35g/t gold over 2m in hole FHAC008, noting a total of 552 prior explorer air-core holes)

Anomalous gold and copper results were returned in all nine air-core holes across a ~900m strike including the fifth highest grade air-core interval to date at the Fairholme project (3.35 g/t gold over 2m, from 52m in hole FDAC008).



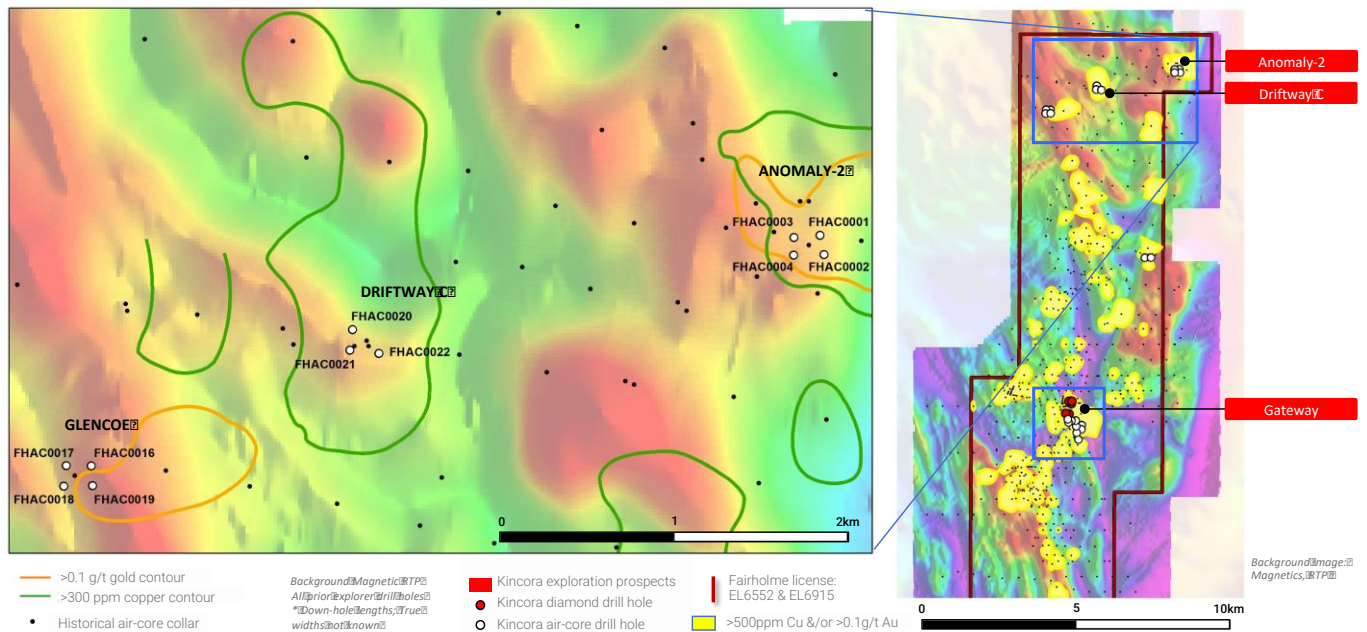
**Figure 6: Gateway long section illustrates extensive mineralised system largely untested at depth and open**  
 Long section to Figure 5

The first phase diamond drilling and second phase air-core program have confirmed a zoned and structurally controlled mineralised corridor across a greater than 1.6km strike at Gateway (and open). Plans are to continue to test the southern strike potential at the Gateway South and Nerang targets, which are situated on the key regional structure interpreted to be associated with the structurally controlled “gold corridor” at the adjacent Cowal gold mine.

Kincora was awarded during December 2021 a A\$200,000 project drilling grant for the diamond and air-core drilling programs at the Gateway prospect under the New Frontiers Cooperative Drilling program from the NSW Government.

Subsequently, the 2022 Kincora air-core program also tested four other prospects, being the first drilling at these prospects since 1997. The program was analogous to the original Geopeko reconnaissance RAB drilling to bedrock program over many targets, largely selected on the basis of geophysical data and insufficiently followed up geochemical data. That program by Geopeko ultimately led to the discovery of the Cowal gold-base metal deposits and is an exploration strategy Kincora is looking to further replicate.

The Kincora air-core program successfully converted two of the four anomalies drilled to highly prospective targets. All holes drilled at the Driftway C target returned broad anomalous copper, including end of hole primary mineralisation. At the Anomaly 2 target, all holes drilled returned anomalous copper, with intrusion related anomalous copper and gold noted in half the holes.

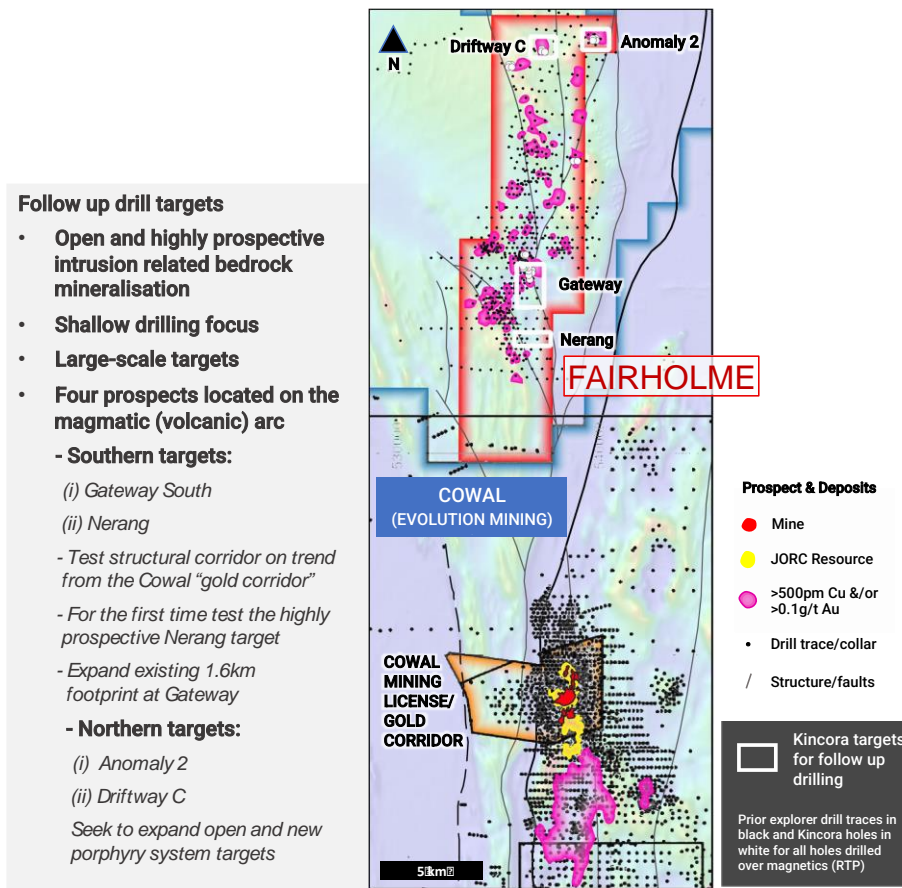


**Figure 7: First drilling at northern prospects since 1997 delivers**

Anomaly 2 and Driftway identified as highly prospective follow up targets - all Kincora holes returned anomalous copper

Follow up air-core and diamond drilling programs have been designed to expand the open near surface footprints and evaluate the untested potential for underlying porphyry gold-copper related systems at shallow to moderate depth at the Gateway (South), Nerang, Driftway C and Anomaly 2 targets (Figure 8).

Discussions with potential asset level partners continue, assisted by Kincora securing 100% ownership of the project in December 2023.



**Figure 8: Four large-scale prospects identified for follow up drilling**  
 In December 2023, Kincora consolidated a 100% interest in the Fairholme project

Further details and technical disclosures for the Fairholme project, and neighbouring Cowal mine, are available at: <https://kincoracopper.com/fairholme-project-including-an-extensive-project-level-presentation-december-2023>.

***Jemalong Project***

The Jemalong project is located in the southern sector of the Junee-Narromine Belt of the Macquarie Arc in the Cowal block with license contiguous to Evolution Mining’s flagship Cowal project, immediately on the other side of Lake Cowal, and ~12km north of the Marsden gold-copper porphyry deposit (~1Moz Au and ~0.5Mt Cu resource). In February 2024, FMG secured the license immediately adjacent to the south of the Jemalong project.

Jemalong was previously the focus of limited drilling by BHP and Newcrest targeting a major low-grade, high tonnage gold deposit amendable to open pit mining and hosts the potential for higher grade alkalic gold-copper porphyry systems (similar to Marsden) and/or intrusion related gold-base metals systems (similar to Cowal).

Kincora has identified three targets at the Jemalong project for drilling:

- Limited drilling has confirmed a mineralised porphyry system (open) at the Jemalong Channel prospect with step-out drilling required,
- Maiden drilling proposed at the Edols and Webster prospects, testing similar targets and settings that lead to the discovery of Marsden.



These targets and designed drill programs were successful with winning grants in the fourth round of the NSW Government’s New Frontiers Cooperative Drilling grants program (December 2021). Due to significant regional and project level flooding these programs were not completed prior to the June 2023 deadline.

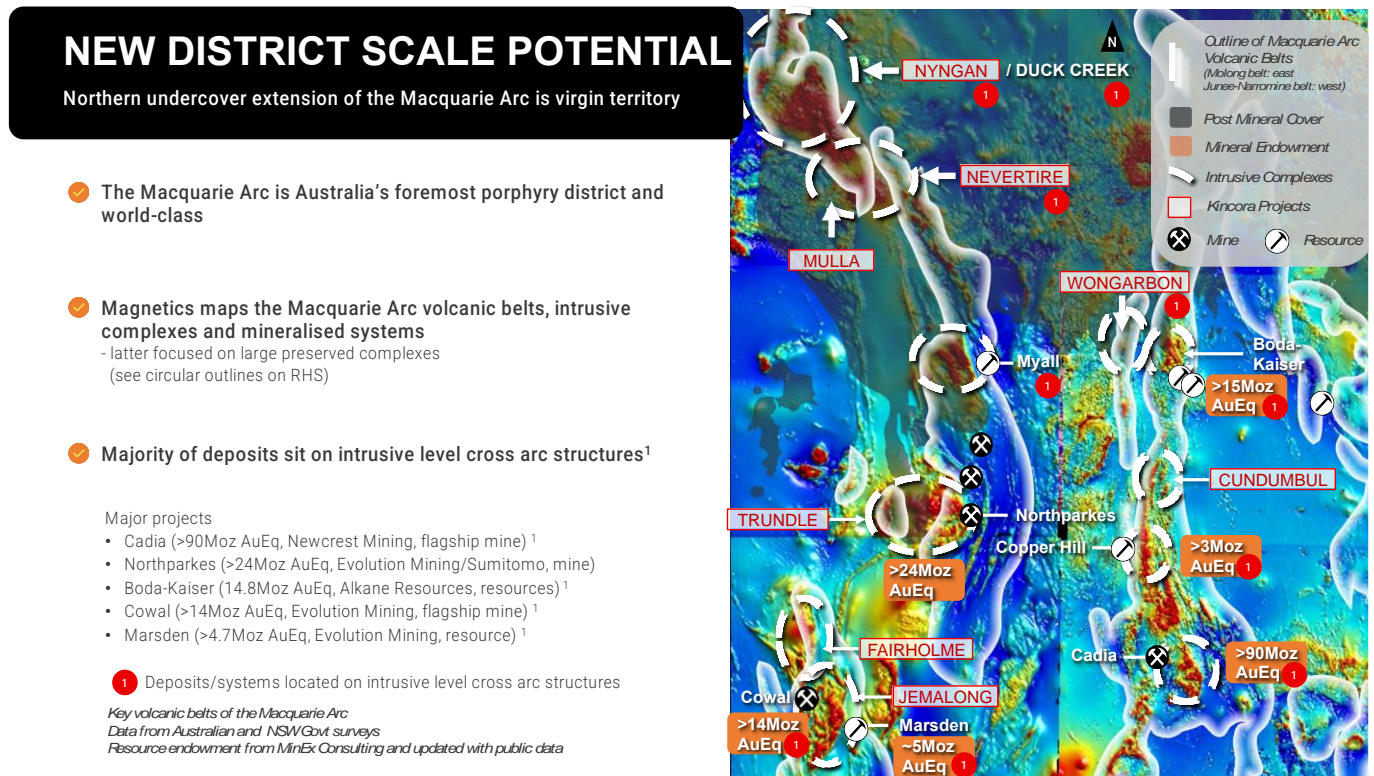
Discussions with potential asset level partners continue, assisted by Kincora securing 100% ownership of the project in December 2023.

Further details and technical disclosures for the Jemalong project are available at:

<https://kincoracopper.com/jemalong-project/> including an extensive project level presentation (December 2023).

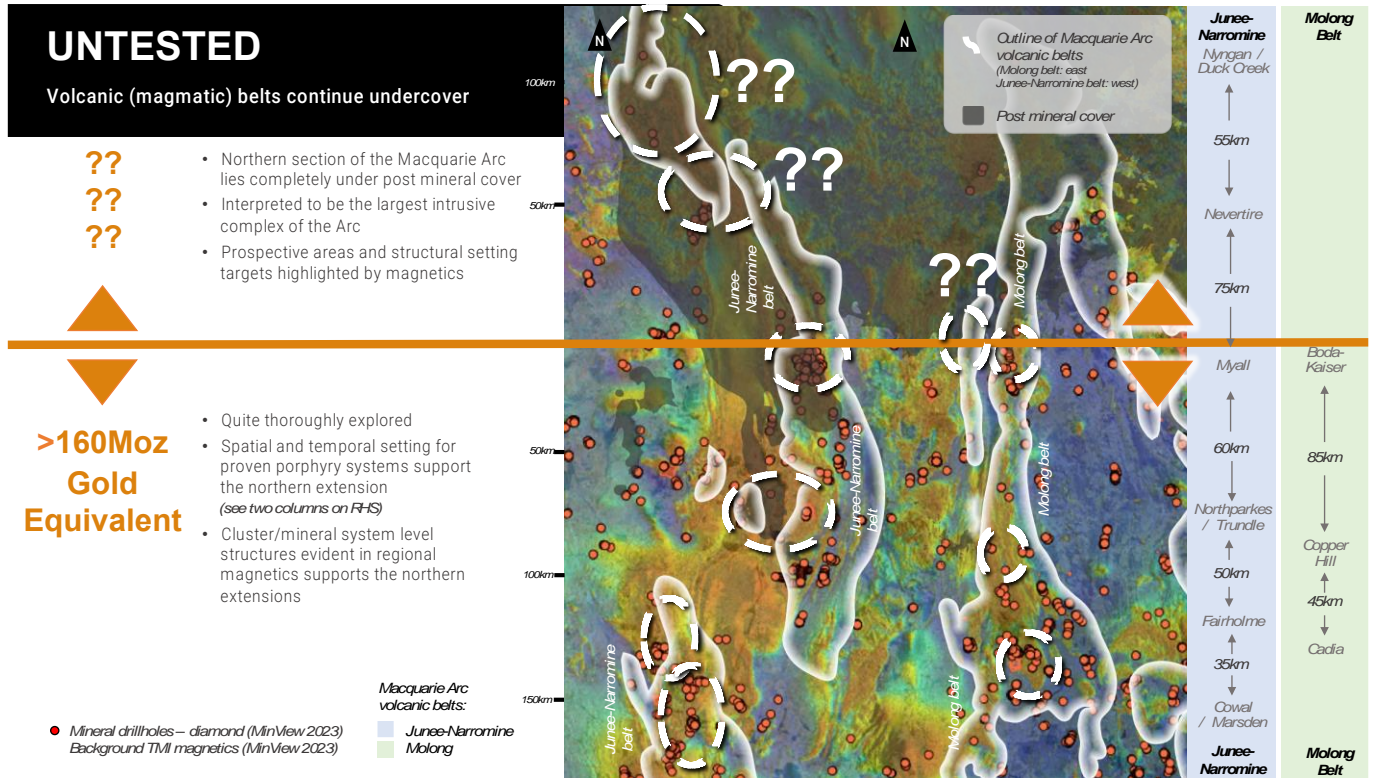
**Northern Junee-Narromine Belt Project Portfolio**

Kincora’s Northern Junee-Narromine Belt (the “NJNB”) portfolio and strategy includes the wholly owned Nyngan, Nevertire and Mulla licenses covering 1,553.2km<sup>2</sup>. The portfolio includes a large portion of what is interpreted by Kincora to be the most prospective and shallow to moderate covered part of the commonly accepted northwards extension of the Junee-Narromine Belt of the Macquarie Arc. Due to post mineral cover, there has been very limited prior drilling in this section of the belt relative to the southern section (see Figure 9).



Kincora was an early mover into the region, which is within a structural jog along the Junee-Narromine belt. This jog is favourably comparable to the Lachlan Transverse Zone and other NW-SE lineaments that have often been interpreted as fundamental controls on the formation of the porphyry related mineralized systems in the Macquarie Arc (e.g., Cadia, Northparkes, Boda-Kaiser and Cowal-Marsden).

The NJNB offers new district-scale discovery potential with spatial and temporal settings, coupled with magnetics, supportive of large-scale targets analogous to porphyry deposits located in the southern section of the Macquarie Arc and other globally significant porphyry districts (see Figure 10).



**Figure 10: The Northern Junee-Narromine Belt is an untested district under the most mineral cover**

Regional magnetics clearly maps the Macquarie Arc volcanic belts, intrusive complexes and mineralised systems – the latter focused on large transverse structures

The copper-gold potential of the NJNB and northern extension of the Molong belt is beginning to be recognized as they compare extremely favourably to other global porphyry hot spots for exploration and development (see Figure 11). The district is now fully pegged by Kincora, Fortescue Metals Group (“FMG”) and Inflection Resources.

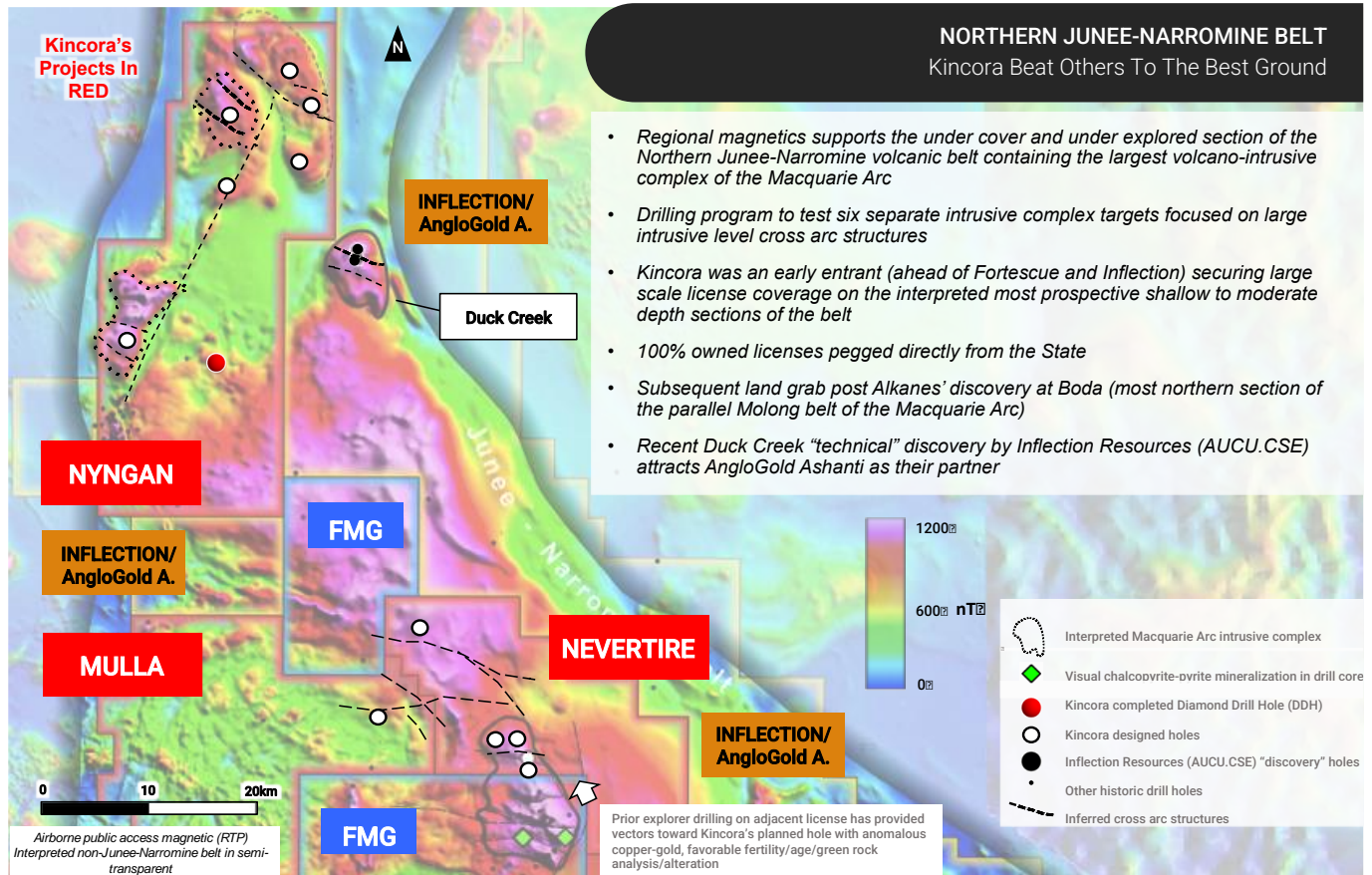
	<b>Macquarie Arc</b> Junee-Narromine & Molong Belts	<b>Golden Triangle</b> Stikine multiphase arc	<b>Vicuña District</b> Miocene metallogenic belt	<b>Nth Andean Belt – Ecuador</b> Eocene + Miocene belts
<b>Deposit analogous</b>	<b>Cadia</b> (>50Moz Au, >9.5Mt Cu)	<b>Red Chris</b> (>13Moz Au, >4Mt Cu)	<b>Filo Del Sol</b> (>6.7Moz Au, >2Mt Cu)	<b>Alpala</b> (>23.6Mt Au, >10Mt Cu)
<b>Hurdles for prior exploration</b>	<ul style="list-style-type: none"> <li>- Exploration through cover</li> <li>- Inability to secure district scale position(s)</li> <li>- Drilling focused on open pits targets</li> </ul>	<ul style="list-style-type: none"> <li>- Altitude</li> <li>- Seasonal access</li> <li>- Infrastructure</li> <li>- Cost</li> </ul>	<ul style="list-style-type: none"> <li>- Altitude &amp; seasonal access</li> <li>- Infrastructure</li> <li>- Cost</li> <li>- Local ESG considerations</li> </ul>	<ul style="list-style-type: none"> <li>- Ability to secure tenure</li> <li>- Sovereign risk</li> <li>- Local ESG considerations</li> </ul>
<b>Catalyst(s) for new exploration</b>	<ul style="list-style-type: none"> <li>- District scale land positions</li> <li>- Boda/Kaiser + Cowal discoveries/ resource growth</li> <li>- Profitability + scale of Cadia U'grd</li> <li>- U'grd mines at Northparkes + Cowal</li> <li>- Entry of Newmont, AngloGold &amp; FMG + significant growth by Evolution</li> <li>- New greenfield / brownfield development projects/mines</li> </ul>	<ul style="list-style-type: none"> <li>- M&amp;A in the district</li> <li>- Large scale exploration &amp; new discoveries</li> <li>- Snow retreat</li> <li>- New infrastructure projects</li> <li>- Potential caving / U'grd operations</li> </ul>	<ul style="list-style-type: none"> <li>- Filo Del Sol discovery, BHP investment &amp; Filo Mining re-rating</li> <li>- Lunahuasi discovery &amp; NGEX re-rating</li> <li>- Lundin Mining acquisitions of the Josemaria &amp; Caserones projects</li> <li>- Cross-border project treaty precedent</li> <li>- New President</li> </ul>	<ul style="list-style-type: none"> <li>- Opening up of exploration licenses</li> <li>- Construction of / production from the Mirador &amp; Fruta del Norte mines</li> <li>- Large scale new FDI resulting in exploration &amp; new discoveries</li> </ul>
<b>Altitude</b>	Near Sea-level	Moderately Severe	Severe	Moderate
<b>Infrastructure hurdles</b>	Low	High	Extreme	Moderate
<b>ESG risk</b>	Moderate	High	High	High
<b>Sovereign Risk</b>	Low	Low	Moderate	High

**Figure 11: The northern extension of the Macquarie Arc outcores many rival emerging global porphyry districts**  
The Macquarie Arc is Australia's foremost porphyry district and a world-class mining district

In June 2023, Inflection Resources closed an earn-in agreement with Anglo-Gold Ashanti for multiple-year, multiple stage exploration earn-in for up to \$145 million for its Macquarie Arc project portfolio, which provides a very attractive direct peer group valuation and proof of concept for Kincora's NJNB portfolio.

In July, Inflection Resources commenced a two rig drilling program at its Duck Creek discovery, which is located within 2.5km of Kincora's Nyngan license boundary. The commenced program is for up to 35,000 metres and is designed to test 20 other targets within the Duck Creek license adjacent to the Nyngan license.

Kincora has designed drilling programs to test six separate intrusive complex targets focused on large intrusive level cross arc structures, all of which have never been drill tested. Discussions and negotiations with potential asset level partners continue.



**Figure 12: Six new large-scale prospects identified for drilling**

Kincora owns a 100% interest in the NJNB project portfolio

A maiden hole drilled to basement at the Nevertire project was completed in 2023, following up positive geological and magnetic vectors from adjacent ground (and a confirmed copper-gold Phase 4 Macquarie Arc intrusive complex), with the hole co-funded by a NSW Government grant. Post drilling analysis by Kincora observed that the core of the primary large-scale magnetic target was not intersected by the maiden drill hole and this target area remains open for further testing (Figure 12).

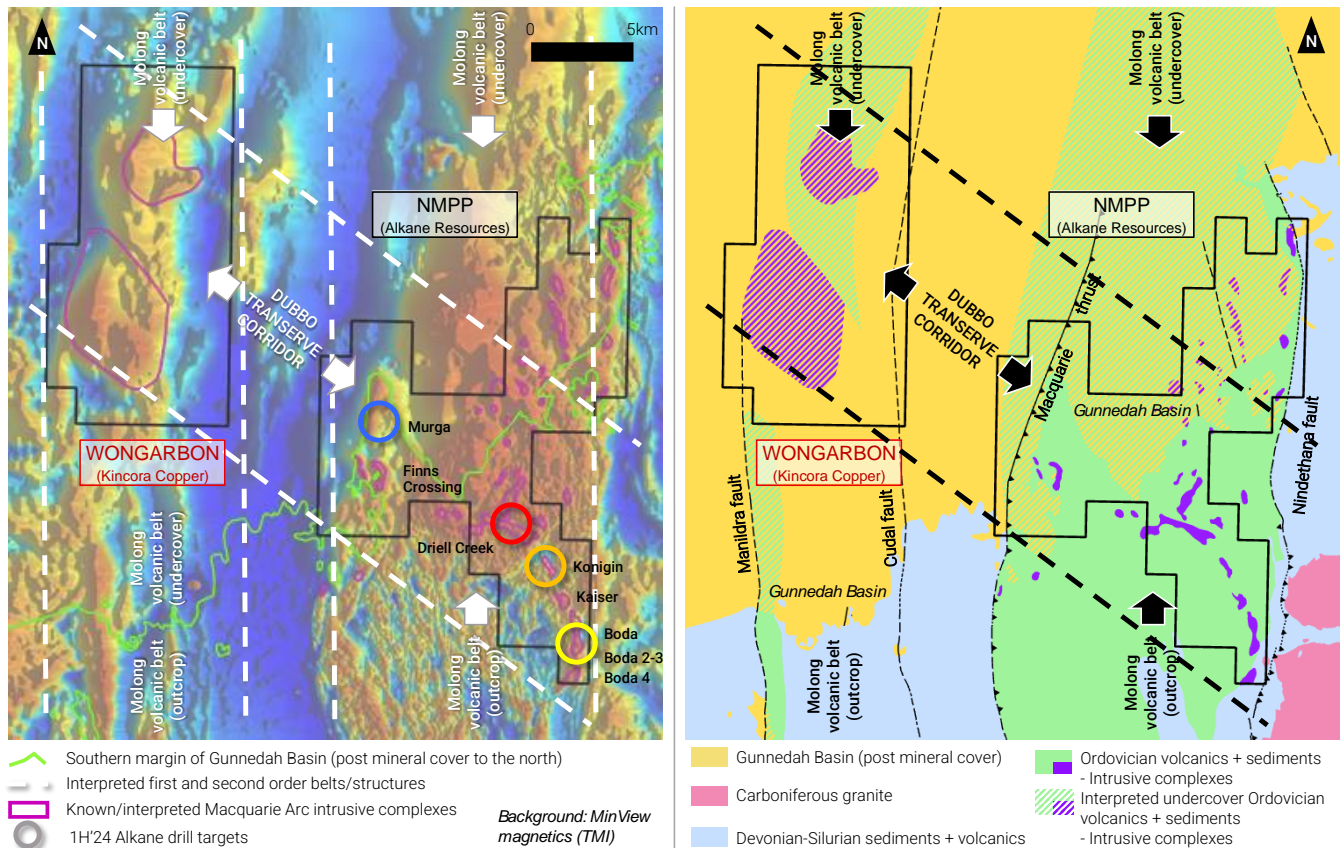
Further details and technical disclosures are available at:

<https://kincoracopper.com/northern-junee-narromine-belt-including-an-extensive-project-level-presentation-december-2023>

**Wongarboron**

In February 2024, Kincora pegged the Wongarboron project (ELA6708), covering 172.8km<sup>2</sup>, located on the shallow to moderate covered extension of the Molong Belt of the Macquarie Arc (the eastern major parallel belt to the Junee-Narromine). The Wongarboron project has never been drilled and hosts compelling drill ready targets.

The Wongarboron Magnetic Complex is interpreted to be a composite volcanic and intrusive complex such as Cadia, Copper Hill and Boda-Kaiser on the Molong Belt, with analogous aeromagnetic signatures to other Macquarie Arc porphyry complexes (eg Cadia, Cowal, Northparkes, Boda-Kaiser, Marsden etc). The Wongarboron project was previously identified by Newcrest in 1996, target depth 300-400m, but not drill tested due to higher priority NSW targets driven by the Cadia Far East and Ridgeway discoveries.

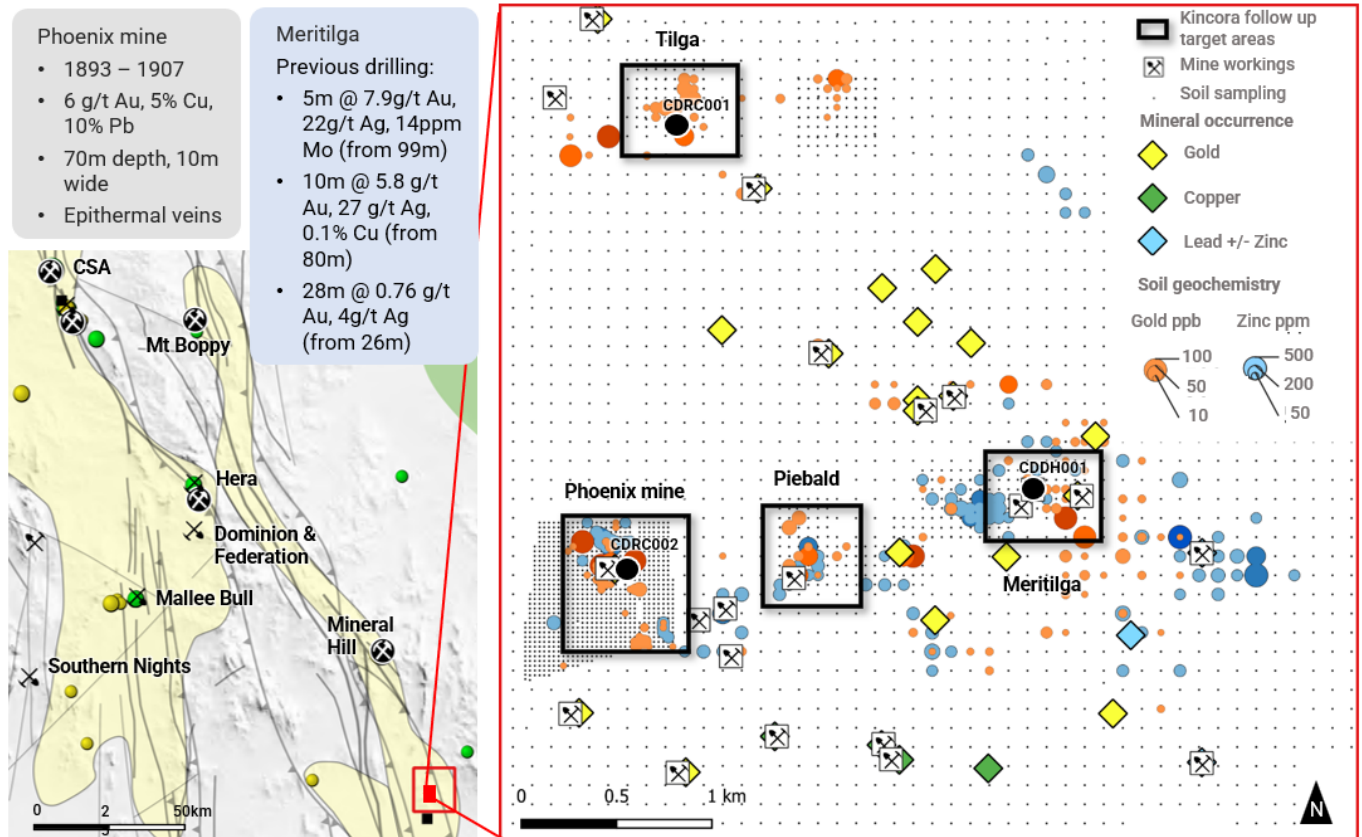


Kincora has recently consolidated a 100% ownership and the interpreted near surface potential associated within the CBMD, total project size 207.4km<sup>2</sup> across two adjacent licenses, and in 2023 completed a maiden drilling program, testing new geological concepts and targets at the Meritilga, Phoenix and Tilga prospects.

Three single scout drill holes completed at each prospect has identified the presence of shallow level (near surface) gold and gold-silver-base metals in basement rocks. The program sought to confirm new geological concepts and has indicated the along strike potential across an open 2.7km northeast-trending strike with demonstrated potential for higher grade precious metals tenor, including most recent assay results of up to 9.1 g/t gold and 530 g/t silver. Following the successful first phase Kincora drill program, exploration plans and drilling permits are in place to test the Meritilga and Piebald prospects, with consideration to also undertake airborne geophysics across the full project and the expectation of further targets being generated below shallow post mineral cover.

The first and northeastern diamond hole CDDH001 at the Meritilga prospect intersected near surface gold and silver observed to be with multiple laminated and colloform banded quartz-sulphide veins and also in breccia zones with quartz-sulphides, with the mineralising system open further to the north, northeast and along strike towards the southwest.

To the southwest, gold, silver and base metals (copper, lead and zinc) were intersected in chips from reverse circulation hole CDRC002 at the Phoenix prospect, with the prospect area open towards the southwest, north and the northeast. This is a very significant mineralising precious-base metal system, with further potential to test and expand the scale of this system along strike.



**Figure 14: Shallow level gold-silver-base metal targets confirmed**

Maiden Kincora scout drilling program completed at the Condobolin project

Mineralisation within the CMBD is hosted in colloform banded quartz veins and shear zones within meta-sedimentary units, inferred to be the Ordovician Girilambone Group. The quartz veins are associated with pyrite, arsenopyrite, chalcopyrite, sphalerite, galena, silver and gold.

The mineralisation is inferred to have been emplaced syn- to post-thrusting and is also associated with multiple pulses of mineralisation. The source of the mineralisation is interpreted to be magmatic and potentially related to vertically extensive and reduced intrusive systems, typical of other Cobar Superbasin mineral systems.

Kincora's maiden drilling program sought to test new geological concepts for the controls of mineralisation at three existing high-grade gold-base metal targets; the Meritilga; Phoenix; and, Tilga prospects – see Figure 14 - testing several NW-SE trending mineralised intervals that appear to be structurally controlled and also similar to the regional NW trending lineaments defined by magnetics. These NW trends are also evident in soil and rock chip sampling geochemistry and had not been adequately drill tested previously (Figure 1).

The three prospects are located within a 2km radius of each other, and the 2023 programs results, combined with further targets across the project, support the concept of a potential hub and spoke development scenario.

High grade, near surface gold drill targets have been identified for follow up in addition to a district scale geophysical program across the full Condobolin Base Metal District.

**Cundumbul Project**

The Cundumbul project is located in the central Molong volcanic belt of the Macquarie Arc, approximately 30km south of Alkane’s Boda-Kaiser porphyry project (Boda resource ~10.9Moz AuEq and Kaiser resource ~4.7Moz AuEq), 25km north of Copper Hill (>3Moz AuEq resource) and 70km north of Cadia (>90Moz AuEq endowment).

Last exploration efforts were lead by Mitsubishi Materials Corporation during an earn-in period (concluded 2015). Mineralised monzonitic intrusions have been identified at both the Andrews and Bells prospects, in the north and south respectively of the Cundumbul project, located over 10km apart.

More recent exploration by Sultan Resources at multiple common prospect mineral systems adjacent to the projects license boundary have returned extensive hydrothermal alteration, anomalous copper and gold, and further confirmed porphyry potential.

On October 6<sup>th</sup>, 2022, Kincora announced a success-based exploration alliance agreement with Earth AI Pty Ltd (“*Earth AI*”) to generate and drill test artificial intelligence and machine-based learning targets at the Cundumbul project. The agreement supports a co-funding and royalty model with Earth AI to spend up to A\$4.5m generating and drill testing targets and to earn a royalty only upon a new drilling discovery (qualify intersection). The agreement does not affect the capital structure of the Company or ownership in the project, with Kincora consolidating 100% project ownership in December 2023.

In the last year, after a thorough geological research and Artificial Intelligence (“*AI*”) targeting phase, multiple phases of ground truthing field work have been completed by Earth AI to confirm and refine drill hole targeting hypotheses. This reconnaissance work program has outlined a large anomalous copper zone, and assisted, confirm and refined target assessments.

Permits and land access has been secured for a three hole drill program, funded and operated by Earth AI, to test both copper porphyry and skarn targets are anticipated to commence in the next quarter utilizing Earth AI’s in-house diamond drill rig. The upcoming drilling program at Cundumbul follows recent encouragement for Earth AI at two other NSW projects it has drilled at in the last 12 months (including magmatic-related platinum group elements (PGEs) and Ni-Cu-Fe sulphides at Legacy Mineral’s Fontenoy project).

For further details and technical disclosures please refer to the October 6<sup>th</sup>, 2022 “*Alliance with Artificial Intelligence Explorer for Cundumbul project*” and May 2<sup>nd</sup>, 2023 “*Earth AI Commences Field Work at Cundumbul project*” press releases for further details.

**Southern Gobi, Mongolia portfolio**

Kincora has undertaken the first modern district scale exploration across the world-class Southern Gobi copper-gold porphyry belt and retains a 100% interest in one of the largest land positions in the belt.

The Company’s Mongolian portfolio assets include the Bronze Fox mining license (the eastern license of the Bronze Fox project) and Tourmaline Hills exploration license (the western license of the Bronze Fox project), the White Pearl field camp and one of (if not) the largest project generation databases for Mongolia.

On July 26<sup>th</sup>, 2022, the Company noted the maiden inferred Mineral Resource Estimate (“*MRE*”) and updated exploration target for the West Kasulu prospect reported under the JORC code<sup>1</sup> by Resilience Mining Mongolia Limited (“*Resilience*”). The parameters for the MRE and updated exploration target were inline with Resilience’s strategy for a near term, modest scale oxide development project and shallow brownfield drilling at the Bronze Fox Intrusive Complex, coupled with near surface (open pit) greenfield targets at the West Kasulu and Shuteen North Intrusive Complexes.



The majority of the MRE and exploration target are situated within the existing Bronze Fox mining licence with the balance being on the adjoining Tourmaline Hills exploration licence (collectively the Bronze Fox project).

West Kasulu prospect is open on strike and at depth, hosted within a small portion of the much larger mineralised Bronze Fox Intrusive Complex, which is one of three so far identified near surface and under explored intrusive complexes at the wider Bronze Fox project.

In late 2022, Kincora terminated the Joint Venture Agreement with Resilience to retain a 100% and unrestricted interest in our Mongolian license portfolio and subsidiaries.

In June 2023, Kincora advised that following the receipt of several unsolicited enquiries that the Company had commencement an externally led strategic review process, with support from Cerberus Advisory, for the Mongolian asset and license portfolio with the view of maximising shareholder value and streamlining focus toward the core NSW project portfolio.

The externally led review successfully concluded resulting in a confidential and incomplete offer that included the receipt of a non-refundable deposit. That proposed transaction has not proceeded, however the divestment process is ongoing and further announcements will be made as and when material developments are made.

Field season activities, completed in 4Q'2023, included mapping, soil and rock chip sampling, meeting expenditure and community requirements, and capital efficiently advancing four porphyry copper deposit targets and one epithermal gold target, including at a newly identified and regionally significant intrusive complex (Shuteen North).

Further details are available at:

<https://kincoracopper.com/southern-gobi-belt> or via Cerberus Advisory (email [Duncan@cerberusadvisory.com.au](mailto:Duncan@cerberusadvisory.com.au)).

### **Qualified Person**

*The scientific and technical information was prepared in accordance with the standards of the Canadian Institute of Mining, Metallurgy and Petroleum and National Instrument 43-101 – Standards of Disclosure for Mineral Projects (“NI 43-101”) and was reviewed, verified and compiled by Kincora’s geological staff under the supervision of Paul Cromie (BSc Hons. M.Sc. Economic Geology, PhD, member of the Australian Institute of Mining and Metallurgy and Society of Economic Geologists), Exploration Manager Australia, who is the Qualified Persons for the purpose of NI 43-101.*

### **JORC Competent Person Statement**

*Information that relates to Exploration Results, Mineral Resources or Ore Reserves has been reviewed and approved by. Paul Cromie, a Qualified Person under the definition established by JORC and have sufficient experience which is relevant to the style of mineralization and type of deposit under consideration and to the activity being undertaking to qualify as a Competent Person as defined in the 2012 Edition of the ‘Australasian Code for Reporting of Exploration Results, Mineral Resources and Ore Reserves’.*

*Paul Cromie (BSc Hons. M.Sc. Economic Geology, PhD, member of the Australian Institute of Mining and Metallurgy and Society of Economic Geologists), is Exploration Manager Australia for the Company. Paul Cromie consents to the inclusion in this report of the matters based on his information in the form and context in which it appears.*

*The review and verification process for the information disclosed herein for the Trundle, Fairholme, Nyngan, Nevertire and Condobolin projects have included the receipt of all material exploration data, results and sampling procedures of previous operators and review of such information by Kincora’s geological staff using standard verification procedures.*

**Selected Financial Information**

The following table provides selected financial information that should be read in conjunction with the audited Consolidated Financial Statements and Notes of the Company for the applicable year:

<i>Summary of Results</i> <i>In thousand \$</i>	<b>Year ended December 31, 2023</b>	<b>Year ended December 31, 2022</b>	<b>Year ended December 31, 2021</b>
Net Loss	(1,460)	(1,961)	(22,581)
Current Assets	1,701	2,379	5,352
Total Assets	17,751	16,094	16,286
Total Liabilities	248	464	681
Shareholders' Equity	17,503	15,630	15,605

**Results of Operations** (reported in Canadian dollars)*Three-Month Period Ended March 31<sup>st</sup>, 2024*

The Company's loss for the three-month period ended March 31<sup>st</sup>, 2024 (the "Current Period") was \$355,000 or \$0.00 per share as compared with \$372,000 or \$0.00 per share for the three-month period ended March 31<sup>st</sup>, 2023 (the "Comparative Period").

General and administrative expenses were \$17,000 lower in the Current Period at \$355,000 compared with \$372,000 in the Comparative Period. This difference was due to lower corporate administrative and office services (\$58,000 versus \$86,000), lower investor relations (\$9,000 versus \$46,000), lower legal and accounting (\$27,000 versus \$46,000), lower share-based compensation (\$Nil versus \$45,000), and lower transfer agent and filing fees (\$31,000 versus \$47,000). These decreases were offset by higher consultants (\$54,000 versus \$38,000), higher directors and audit committee fees (\$63,000 versus \$24,000), higher management fees (\$75,000 versus \$55,000), higher travel (\$5,000 versus \$Nil), and higher foreign exchange loss (\$1,000 versus \$47,000 gain). Consultants – geologists, consultants – technical, and insurance retained at \$5,000, 19,000, and \$8,000, respectively from 2023.

**Summary of Quarterly Results – 000's**

The table below presents selected financial data for the Company's eight most recently completed quarters, all prepared in accordance with IFRS.

<i>In thousand \$</i>	March 31, 2024 (\$)	December 31, 2023 (\$)	September 30, 2023 (\$)	June 30, 2023 (\$)	March 31, 2023 (\$)	December 31, 2022 (\$)	September 30, 2022 (\$)	June 30, 2022 (\$)
<b>Financial Results</b>								
Net loss for period	355	(368)	(365)	(355)	(372)	(469)	(395)	(489)
Basic and diluted loss per share	(0.00)	(0.00)	(0.00)	(0.00)	(0.00)	(0.00)	(0.00)	(0.00)
Exploration expenditures, net of impairment (recovery)	140	880	287	538	719	299	369	1,018
<b>Financial Position</b>								
Cash and cash equivalents	1,028	1,530	1,783	809	1,891	2,224	1,188	2,052
Exploration and evaluation assets	16,027	15,887	15,007	14,720	14,182	13,463	13,164	12,795
Total assets	17,363	17,751	17,263	15,968	16,492	16,094	14,847	15,386
Shareholders' equity	17,134	17,503	17,095	15,738	16,047	15,630	14,603	14,907

---

## Liquidity and Capital Resources

As of March 31<sup>st</sup>, 2024, the Company had current assets in excess of current liabilities of \$946,000 and cash of \$1,028,000. During the year ended December 31, 2023, the Company received \$155,000 (A\$127,850) NSW government grants relating to completed drilling at the Nyngan and Trundle projects.

On March 6, 2023, the Company issued 15,132,794 shares at \$0.05 (A\$0.055) per share for gross proceeds of \$756,640 (A\$832,304) from the second tranche of the December 2022 private placement. The Company incurred share issuance costs of \$32,657.

On July 27, 2023, the Company executed a conditional agreement with RareX to acquire its carried 35% asset level interests in the Trundle, Fairholme, Jemalong, Cundumbul and Condobolin licenses. In consideration, the Company issued e 40m CDIs, and granted a 1% NSR for the vended licenses to RareX (the "RareX Transaction").

The RareX Transaction is subject to:

- (a) shareholder approval proposed to be obtained at an Annual General and Special Meeting ("AGM"), which was achieved September 26<sup>th</sup>, 2023;
- (b) completion of the placement for an aggregate subscription amount of not less than 30 million CDIs (\$1.5m), which was achieved via the oversubscribed A\$2m private placement announced August 8<sup>th</sup>, 2023; and,
- (c) the parties obtaining approvals required under the Mining Act 1992 (NSW), which was achieved in 4Q'2023.

Completion resulted in Kincora securing a 100% interest in all of the Company's NSW projects.

On August 8<sup>th</sup>, 2023, the Company completed an oversubscribed private placement and raised \$1,784,167 (A\$2,030,000) via the issuance of 40,600,000 new CDIs at \$0.044 (A\$0.05) per CDI. This placement includes a one (1) for two (2) free-attaching option exercisable at A\$0.075 (C\$0.065) and expiring 24-months from the issue.

On December 15, 2023, the Company completed the acquisition of RareX's minority and carried interest in various projects to now have a 100% ownership of the entire NSW project portfolio.

The Company does not have any positive cash flow from operations due to the fact that it is an exploration stage company; therefore, financing activities have been the sole source of funds and continued efforts to reduce non-core expenditure. Given volatility in equity markets, global uncertainty in economic conditions, the novel coronavirus (COVID-19) pandemic, cost pressures and results of exploration activities, management constantly reviews expenditures and exploration programs and equity markets.

As at March 31<sup>st</sup>, 2024, the Company had an accumulated deficit of \$188,190,000, current assets in excess of current liabilities of \$946,000 and a cash balance of \$1,028,000, and a net loss for the three-month period ended March 31<sup>st</sup>, 2024 of \$355,000.

During the three-month period ended March 31<sup>st</sup>, 2024, the Company had cash of \$258,000 used in operating activities and \$244,000 used in investing activities which was mainly used for the acquisition of equipment and expenditures for the exploration and evaluation assets. The Company's cash position is highly dependent on the ability to raise cash through financings and the expenditures on its exploration programs. As results of exploration programs are determined and other opportunities become available to the Company, management may complete an external financing as required.

At present, the Company's operations do not generate positive cash inflows and its financial success is dependent on management's ability to discover economically viable mineral deposits. The mineral exploration process can take many years and is subject to factors that are beyond the Company's control. In order to finance the Company's future exploration programs and to cover administrative and overhead expenses, the Company has raised money through equity sales, and in the future could raise money from optioning its exploration and evaluation assets.

Many factors influence the Company's ability to raise funds, including the health of the resource market, the climate for mineral exploration investment, the Company's track record, and the experience and caliber of its management, corporate activity and exploration results. Actual funding requirements may vary from those planned due to a number of factors, including the progress of exploration activities and industry conditions. Management believes it will be able to raise equity capital as required in the long term, but recognizes that there will be risks involved which may be beyond its control.

### Related Party Transactions

The Company incurred the following amounts for related party services:

- a) During the three-month period ended March 31, 2024, the Company incurred \$18,450 (2023 - \$18,450) to a company with an officer in common for management and accounting services.
- b) During the three-month period ended March 31, 2024, the Company incurred \$75,000 (2023 - \$55,000) to an officer and a company with an officer in common for management services.
- c) During the three-month period ended March 31, 2024, the Company incurred director's fees of \$80,500 (2023 - \$41,500) to current directors.
- d) During the three-month period ended March 31, 2024, the Company incurred consulting fees of \$5,000 (2023 - \$5,000) to a director of the Company.
- e) At March 31, 2024, the Company owed \$301,830 (December 31, 2023 - \$242,710) in accrued directors' fees and management and accounting fees in accounts payable, which are non-interest bearing and due on demand, and obligation to issue shares.
- f) During the year ended December 31, 2023, the Company issued 40,000,000 CDIs to RareX for the acquisition of the 35% interest in the NSW project portfolio.

### Compensation of key management personnel

<i>In thousand \$</i>	<b>March 31, 2024</b>	March 31, 2023
Management, chairman, directors, and audit committee fees	\$ 179	\$ 120
Share-based payments	-	45
	<b>\$ 179</b>	<b>\$ 165</b>

### Share Capital Information

The table below presents the Company's common share data as of May 14, 2024 and does not reflect the consideration shares due to RareX from Kincora acquiring RareX's minority interests in various NSW projects.

	Price (\$)	Expiry date	Number of common shares
Common shares, issued and outstanding			247,173,541
Securities convertible into common shares			
Warrants	<i>n/a</i>	<i>n/a</i>	Nil
Stock options	<b>\$0.07</b>	<b>September 27, 2025</b>	27,800,000
Performance rights		<i>n/a</i>	5,520,449
			<b>280,493,990</b>

In consideration of Kincora acquiring RareX's carried 35% asset level interests in the Trundle, Fairholme, Jemalong, Cundumbul and Condobolin licenses, the Company issued 40.6m CDIs and granted a 1% NSR for the vended licenses to RareX (the "RareX Transaction").

On August 8, 2023, concurrent with the RareX transaction, the Company completed a private placement raised \$1,784,167 (A\$2,030,000) via the issuance of 40,600,000 new CDIs at \$0.044 (A\$0.05) per CDI. The placement includes a one (1) for two (2) free-attaching option exercisable at A\$0.075 (C\$0.065) and expiring 24-months from the issue ("Attaching Options"). Associated with the raising, 7,500,000 unquoted options were issued at an exercise price of A\$0.075 (C\$0.065) and expiring 24-months from the date of issue.

On December 15, 2023, the Company completed the acquisition of RareX's minority and carried interest in various projects to now have a 100% ownership of the entire NSW project portfolio.

The Company had a shareholder meeting on March 3, 2023 approving the second tranche of the December 15, 2022, non-brokered private placement, which resulted in the issuance of a further 15,132,795 common shares on March 6, 2023.

During the three-month period ended March 31, 2024, 2,004,506 stock options with an exercise price of \$0.48 and 10,000,000 stock options with an exercise price of \$0.29 have expired unexercised. Subsequent to the period, 7,580,575 stock options with an exercise price of \$0.28 have expired unexercised.

## Contingencies

In the course of its business activities the Company has from time to time, been the subject of civil claims by third parties, including former employees that could give rise to a liability to pay compensation or damages. In addition, the Company may receive notices from regulatory and other governmental agencies responsible for the administration of regulations impacting on the Company's business affairs, in relation to the imposition or intended imposition of penalties, assessments and other orders that could potentially have an adverse effect or negatively impact on the Company's business and financial condition. Based upon historic experience with management of such claims, assessment and regulatory actions, the Company does not anticipate that the outcome of those claims, assessments and regulatory actions, will have a materially adverse effect on the Company's business or financial condition.

## Mongolia

Kincora has invested millions of dollars, substantial expertise and resources, other forms of intellectual property and international best practises, and undertaken many years of exploration and defending its rights and interests in Mongolia, in an economic, socially and environmentally sound manner.

During the year ended December 31, 2021, Golden Grouse received a tax act reassessment for \$2.7 billion Tugriks (MNT), approximately \$1 million (US\$800,000) from the Mongolian Tax Authority ("MTA").

The 2021 tax assessment comprises four items, of which the Company strongly refutes the merit of three including the very vast majority of the liability sought relating to a retrospective tax assessment of the 2016 merger with IBEX (the agreed liability owed is 16.2 million MNT or approximately \$5,700 (U.S.)).

The 2016 IBEX merger required a prior tax assessment, which followed an audit of the IBEX entity's prior-year periods and the on-shore and off-shore agreements to the merger (IBEX and parent entities). The 2016 tax assessment was paid and relied upon by Mongolian government departments to facilitate the merger and was a condition precedent to close the merger with any adverse liability enabling both counterparties to withdraw from the merger (Note 6). In the Company's view, supported by four independent external legal opinions, the 2021 tax assessment's retrospective liability is not in line with the 2016 tax assessment and Mongolian law, and there is no basis for a different determination.

Kincora, IBEX and various Mongolian public sector departments relied upon the 2016 tax audit and rulings to close the merger. The transaction underpinned over C\$12 million of subsequent equity being raised by Kincora, including investments following extensive due diligence from the European Bank for Reconstruction and Development (EBRD, one of the largest investors in Mongolia and an IFI like the IFC), and, Resource Capital Funds (RCF, one of the largest resource specialist private equity groups).

Since 2021, the Company has pursued defending the 2016 tax ruling, paid a \$52,000 (MNT \$100 million) security deposit (materially more than the agreed liability owed of 16.2 million MNT) to facilitate this legal defence and objection to the 2021 tax act via the Mongolian administrative courts.

In March 2023, Kincora applied to the Mongolian Administrative Chamber for the dispute to receive a hearing at the Supreme Court, which is the last legal defence step available under the Mongolian judicial system having undertaken two prior court hearings (which provided conflicting rulings) and the Mongolian Tax Dispute Counsel failing to hear the required case. This application was accepted and follows the last Appeal Court ruling (in January 2023) being outside of the litigants' appeal and counter-arguments, overturned a prior First Instance Administrative Court ruling that referred the reassessed tax act back to the MTA (with annulment occurring in 3 months should the MTA take no action), and preceded in a timeframe far too short to consider the merits of the reassessed Tax Act.

In May 2023, the Supreme Court hearing occurred with the dispute returned to the First Instance Administrative Court with a review ongoing of the reassessment by a court panel of independent tax experts. A First Instance Administrative Court hearing is shortly expected to hear the findings of the independent tax expert review.

The Company has sought to defend its position in a fair and equitable manner following due process and Mongolian law, with support from various Third Neighbour missions and business associations.

Kincora has sought to utilise the ombudsman and dispute counsel process with the MTA – and then the government's own Investor Protection Council (IPC) mechanism – both unsuccessfully. This necessitated continuing to defend our position in Mongolian judicial system, which has traversed the three levels of the court process. Post the May 2023 Supreme Court ruling, which sent the matter back to the lowest level court, Kincora has sought government level meetings to get more focused attention from the IPC. Kincora has also drafted a proposed mutually beneficial settlement for the tax dispute and sought engagement with appropriate senior Government of Mongolia officials.

Legal advice has also been received that the MTA officials have behaved in a criminal manner (according to how Mongolian law applies to government officials) but enquiries to the police have not been adequately responded to.

After 3 years, Kincora efforts and initiatives to date have proven ineffective and there is no clear timeline or path for resolution under Mongolian law or the Mongolian judicial system.

In June 2023, Kincora advised that following the receipt of several unsolicited enquiries that the Company had commencement an externally led strategic review process, with support from Cerberus Advisory, for the Mongolian asset and license portfolio with the view of maximising shareholder value and streamlining focus toward the core NSW project portfolio.

The externally led review successfully concluded resulting in a confidential and incomplete offer that included the receipt of a non-refundable deposit. That proposed transaction has not proceeded, however the divestment process is ongoing and further announcements will be made as and when material developments are made.

### **Brazil**

Brazilian Diamonds, a former name of the Company, in 2001 to 2005, via the Brazilian subsidiary Samsul, held certain mineral rights, and some of these rights were the focus of alluvial diamond operations undertaken by an assignor in the State of Goias. In 2015, a lawsuit was filed by state and federal prosecutors seeking indemnification from certain defendants (including but not limited to Samsul and the assignor) in the amount of BRL 492,840, equivalent to seventy (70) carats of diamonds and 9000M3 of gravel. The case is with the lower courts in Brazil and the timing for hearing is undeterminable as at audit report date. The Company does not believe there is merit in this case.

### **Capital Management**

The Company's objectives when managing capital are to safeguard the Company's ability to continue as a going concern in order to pursue the development of its mineral properties and to maintain a flexible capital structure for its projects for the benefit of its stakeholders. As the Company is in the exploration stage, its principal source of funds is from the issuance of common shares.

In the management of capital, the Company includes the components of shareholders' equity.

The Company manages the capital structure and makes adjustments to it in light of changes in economic conditions and the risk characteristics of the underlying assets. To maintain or adjust the capital structure, the Company may attempt to issue new shares, enter into joint venture property arrangements, acquire or dispose of assets or adjust the amount of cash and investments.

The Company's investment policy is to invest its cash in highly liquid short-term interest-bearing investments with maturities of three months or less from the original date of acquisition, selected with regards to the expected timing of expenditures from continuing operations.

The Company is uncertain as to whether its current capital resources will be sufficient to carry its exploration plans and operations through its current operating period and, accordingly, management is reviewing the timing and scope of current exploration plans and is also pursuing other financing alternatives to fund the Company's operations.

Due to the difficult market conditions and the Company's share price performance, the Remuneration Committee in mutual agreement with the CEO has elected to suspend bonus payments for the CEO and key staff for the year ending 2021 and 2022.

### **Off-Balance Sheet Arrangements**

The Company has no off-balance sheet arrangements.

### **Management of Financial Risk**

The Company's financial instruments are exposed to certain financial risks. The risk exposures and the impact on the Company's financial instruments are summarized below:

*Interest Rate Risk*

The Company has non-material exposure at March 31, 2024 to interest rate risk through its financial instruments.

*Currency Risk*

The Company's operations are focused on Australia and Mongolia, where many exploration and administrative expenses are incurred in the Australian Dollar, Mongolian Tugrik and the US Dollar. The Company's ability to advance funds to Mongolia is subject to changes in the valuation of the Tugrik and the US dollar as well as rules and regulations of the Mongolian government. Fluctuations in the value of the Australian Dollar, Tugrik and the US dollar may have positive and/or adverse effect on the operations and operating costs of the Company. Management seeks to limit foreign current risk, primarily seeking to retain funds in Canada and Australia wiring funds as and when needed to foreign subsidiaries to meet operating expenditures, and believes this risk to be minimal.

*Credit Risk*

The Company's primary exposure to credit risk is on its cash held in bank accounts. The majority of cash is deposited in bank accounts held with major banks in Canada and Australia, with more limited funds held in Mongolia, where the Mongolian subsidiaries make monthly cash calls. As most of the Company's cash is held by three banks there is a concentration of credit risk, and, in Mongolia one of the two subsidiary's bank accounts has been frozen by the Mongolian Tax Authority as a result of an ongoing tax dispute. This risk is managed by using major banks that are high credit quality financial institutions as determined by rating agencies and looking to avoid holding more than one months budgeted cash reserves in Mongolia.

Receivables consist of goods and services and the harmonized sales tax due from the Government of Canada. Management believes that the credit risk concentration with respect to receivables is remote.

The Company's investment policy is to invest its cash in highly liquid short-term interest-bearing investments with maturities of three months or less from the original date of acquisition, selected with regards to the expected timing of expenditures from continuing operations. Management believes its credit risk to be minimal.

*Liquidity Risk*

The Company attempts to manage liquidity risk by maintaining sufficient cash and cash equivalent balances. Liquidity requirements are managed based on expected cash flows to ensure that there is sufficient capital in order to meet short-term obligations.

As at March 31, 2024, the Company had a cash balance of \$1,028,000 (December 31, 2023 - \$1,530,000) to settle current liabilities of \$229,000 (December 31, 2023 - \$248,000). On December 15, 2022, the Company raised \$1,330,000 from the first tranche of a non-brokered private placement. In addition, the Company had a shareholder meeting on March 3, 2023 approving the second tranche A\$832,304 of the December 15, 2022 placement, which resulted in the issuance of a further 15,132,795 common shares on March 6, 2023. During the year ended December 31, 2023, the Company received \$155,000 (A\$127,850) NSW government grants relating to completed drilling at the Nyngan and Trundle projects.

On July 27, 2023, the Company executed a conditional agreement with RareX Limited ("RareX") to acquire its carried 35% asset level interests in the Trundle, Fairholme, Jemalong, Cundumbul and Condobolin licenses. In consideration, the Company will issue 40m CDIs, and granted a 1% NSR for the vended licenses to RareX (the "RareX Transaction").

As part of the acquisition, the Company has completed an oversubscribed private placement and raised \$1,784,167 (A\$2,030,000) via the issuance of 40,600,000 new CDIs at \$0.044 (A\$0.05) per CDI. This placement includes a one (1) for two (2) free-attaching option exercisable at A\$0.075 (C\$0.065) and expiring 24-months from the issue.



On December 15, 2023, the Company completed the acquisition of RareX's minority and carried interest in various projects to now have a 100% ownership of the entire NSW project portfolio.

#### *Commodity Price Risk*

The Company's ability to raise capital to fund exploration or development activities is subject to risks associated with fluctuations in the general market prices and investor sentiment, particularly relating to copper and gold. The Company closely monitors general market conditions and commodity prices to determine the appropriate course of action to be taken.

#### **Critical Accounting Estimates**

The preparation of interim condensed consolidated financial statements requires the Company to select from possible alternative accounting principles, and to make estimates and assumptions that determine the reported amounts of assets and liabilities at the statement of financial position date and reported costs and expenditures during the reporting period. Estimates and assumptions may be revised as new information is obtained, and are subject to change. The Company's accounting policies and estimates used in the preparation of the consolidated financial statements are considered appropriate in the circumstances, but are subject to judgments and uncertainties inherent in the financial reporting process.

Property acquisition costs and related direct exploration costs may be deferred until the properties are placed into production, sold, abandoned, or written down, where appropriate. The Company's accounting policy is to capitalize exploration costs, which policy it believes to be consistent with IFRS and applicable guidelines for exploration stage companies. The policy is consistent with other junior exploration companies that have not established mineral reserves objectively. An alternative policy would be to expense these costs until sufficient work has been done to determine that there is a probability a mineral reserve can be established; or alternatively, to expense such costs until a mineral reserve has been objectively established. Management is of the view that its current policy is appropriate for the Company at this time. Based on annual impairment reviews made by management, or earlier if circumstances warrant, in the event that the long-term expectation is that the net carrying amount of these capitalized exploration costs will not be recovered, then the carrying amount is written down accordingly and the write-down charged to operations. A write-down may be warranted in situations where a property is to be sold or abandoned; or exploration activity ceases on a property due to unsatisfactory results or insufficient available funding.

#### **Risks and Uncertainties**

The Company is engaged in the business of acquiring, exploring and developing mineral properties with the expectation of locating economic deposits of minerals. All of the properties are without proven copper/gold deposits and there is no assurance that the Company's exploration programs will result in proven copper/gold deposits, nor can there be any assurance that economic deposits can be commercially mined. As a consequence, any forward-looking information is subject to known and unknown risks and uncertainties.

Confirmation or otherwise of our more advanced geological models, advancement of earlier stage project pipeline and exploration success is expected to materially impact the value of the Company. The ability of the Company to systematically advance its district-scale project pipeline from a technical perspective is a fundamental value driver, upside and downside, to the Company and its valuation. The ability of the Company to commercially advance and effect its exploration strategy is also a fundamental value driver.

The Company will be required to negotiate access arrangements and pay compensation to landowners, local authorities, transitional land users, the NSW Government and others who may have an interest in the area covered by a tenement/license. The Company's ability to resolve access and compensation issues may have an impact on the future success and financial performance of the Company's operations.

The responsibility of overseeing the day-to-day operations and the strategic management of the Company depends substantially on senior management, the exploration team and contractors, who are an integral part of the business. Should there be resignations, there may be difficulties in recruiting similar high-quality personnel and overall team balance. There can be no assurance given that there will be no negative impact on the Company if one or more of these key team members cease their employment.

The Company's core focus is its entry into NSW and the NSW project pipeline, with previous projects and subsidiaries viewed as non-core. These non-core assets may have certain ongoing contractual obligations and operations, which have inherent business risk and potential legacy risks. The Company has been listed since 1983, operating in emerging and frontier markets such as Brazil and then Mongolia.

The material changes to known and unknown risks and uncertainties during the three-month period ended March 31<sup>st</sup>, 2024 have been noted in these accounts.

### **Additional Disclosure for Venture Issuers without Significant Revenue**

Additional disclosure concerning Kincora's general and administrative expenses and exploration and evaluation costs is provided in the Company's consolidated statement of loss and note disclosures contained in its interim condensed consolidated financial statements for the three-month period ended March 31, 2024. These statements are available on Kincora's website at [www.kincoracopper.com](http://www.kincoracopper.com) or on its SEDAR Page Site accessed through [www.sedar.com](http://www.sedar.com) or the Australian Securities Exchange ("ASX") at <https://www2.asx.com.au>.

### **Dividends**

Kincora has no earnings or dividend record and is unlikely to pay any dividends in the foreseeable future as it intends to employ available funds for mineral exploration and development. Any future determination to pay dividends will be at the discretion of the board of directors and will depend on Kincora's financial condition, results of operations, capital requirements and such other factors as the board of directors deem relevant.

### **Management's Responsibility for Consolidated Financial Statements**

The information provided in this report, including the consolidated financial statements, is the responsibility of management. In the preparation of these statements, estimates are sometimes necessary to make a determination of future values for certain assets or liabilities. Management believes such estimates have been based on careful judgments and have been properly reflected in the accompanying consolidated financial statements.

In contrast to the certificate required under National Instrument 52-109 Certificate of Disclosure in Issuers' Annual and Interim Filings ("NI 52-109"), the Venture Issuer Basic Certificate does not include representations relating to the establishment and maintenance of disclosure controls and procedures ("DC&P") and internal control over financial reporting ("ICFR"), as defined in NI 52-109, in particular, the certifying officers filing this certificate are not making any representations relating to the establishment and maintenance of:

- i. controls and other procedures designed to provide reasonable assurance that information required to be disclosed by the Company in its annual filings, interim filings or other reports filed or submitted under securities legislation is recorded, processed, summarized and reported within the time periods specified in securities legislation; and
- ii. a process to provide reasonable assurance regarding the reliability of financial reporting and the preparation of consolidated financial statements for external purposes in accordance with the Company's IFRS.

The issuer's certifying officers are responsible for ensuring that processes are in place to provide them with sufficient knowledge to support the representations they are making in this certificate. Investors should be aware that inherent limitations on the ability of certifying officers of a venture issuer to design and implement on a cost-effective basis DC&P and ICFR as defined in NI 52-109 may result in additional risks to the quality, reliability, transparency and timeliness of interim and annual filings and other reports provided under securities legislation.

### **Nature of the Securities**

The purchase of the Company's securities involves a high degree of risk and should be undertaken only by investors whose financial resources are sufficient to enable them to assume such risks. The Company's securities should not be purchased by persons who cannot afford the possibility of the loss of their entire investment. Furthermore, an investment in the Company's securities should not constitute a major portion of an investor's portfolio.

### **Subsequent event(s)**

At the present time, there are no subsequent events that are required to be disclosed that are not disclosed elsewhere.

### **Proposed Transactions**

At the present time, there are no proposed transactions that are required to be disclosed that are not disclosed elsewhere.

### **Approval**

The Board of Directors oversees management's responsibility for financial reporting and internal control systems through an Audit Committee. This Committee meets periodically with management and annually with the independent auditors to review the scope and results of the annual audit and to review the consolidated financial statements and related financial reporting and internal control matters before the consolidated financial statements are approved by the Board of Directors and submitted to the shareholders of the Company. The Board of Directors of the Company has approved the consolidated financial statements and the disclosure contained in this MD&A. A copy of this MD&A will be provided to anyone who requests it.

**This announcement has been authorized for release by the Board of Kincora Copper Limited (ARBN 645 457 763)**

#### **Executive office Canada**

400 – 837 West Hastings Street  
Vancouver, BC V6C 3N6, Canada  
Tel: 1.604.630.7296

**Email:** [enquiries@kincoracopper.com](mailto:enquiries@kincoracopper.com)

#### **Subsidiary office Australia**

Vista Australia (formerly Leydin Freyer Corp Pty Ltd)  
Level 4, 100 Albert Road  
South Melbourne, Victoria 3205

### **Forward-Looking Information**

Forward-looking statements relate to future events or future performance and reflect management's expectations or beliefs regarding future events and include, but are not limited to, statements with respect to the estimation of mineral reserves and resources, the realization of mineral reserve estimates, the timing and amount of estimated future production, costs of production, capital expenditures, success of mining operations, environmental risks, permitting risks, unanticipated reclamation expenses, title disputes or claims and limitations on insurance coverage. In certain cases, forward-looking statements can be identified by the use of

---

words such as “plans”, “expects” or “does not expect”, “is expected”, “budget”, “scheduled”, “estimates”, “forecasts”, “intends”, “anticipates” or “does not anticipate”, or “believes”, or variations of such words and phrases or statements that certain actions, events or results “may”, “could”, “would”, “might” or “will be taken”, “occur” or “be achieved” or the negative of these terms or comparable terminology. By their very nature forward-looking statements involve known and unknown risks, uncertainties and other factors which may cause the actual results, performance or achievements of the Company to be materially different from any future results, performance or achievements expressed or implied by the forward-looking statements. Such factors include, among others, risks related to actual results of current exploration activities; changes in project parameters as plans continue to be refined; future prices of resources; possible variations in ore reserves, grade or recovery rates; accidents, labour disputes and other risks of the mining industry; delays in obtaining governmental approvals or financing or in the completion of development or construction activities; as well as those factors detailed from time to time in the Company's interim and annual consolidated financial statements which are filed and available for review on SEDAR at [www.sedar.com](http://www.sedar.com). Although the Company has attempted to identify important factors that could cause actual actions, events or results to differ materially from those described in forward-looking statements, there may be other factors that cause actions, events or results not to be as anticipated, estimated or intended. There can be no assurance that forward-looking statements will prove to be accurate, as actual results and future events could differ materially from those anticipated in such statements. Accordingly, readers should not place undue reliance on forward-looking statements.